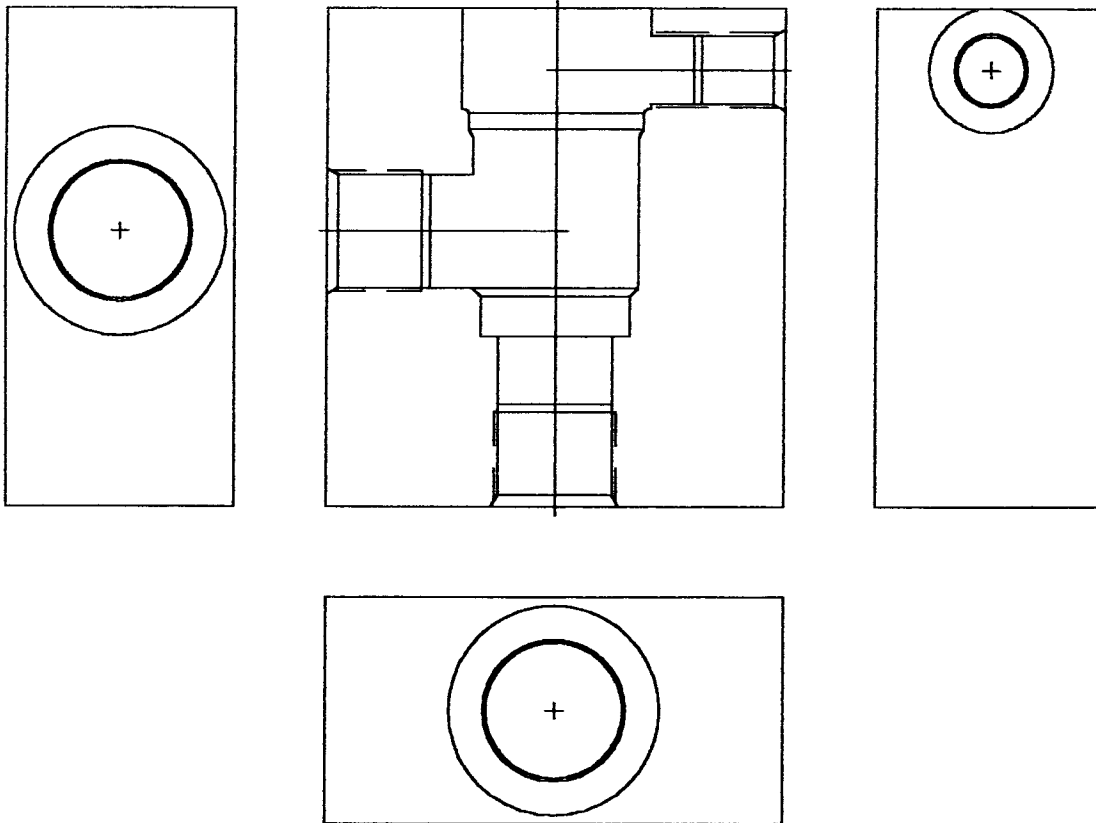


CARTRIDGE VALVE BODY

SCREW-IN STYLE VALVES

Med-Kas has the tooling to machine cartridge cavities for almost every cartridge size and style that is currently available. Our in-house toolmakers, and toolmaking facilities allows us the ability to quickly, and expertly build the tooling for newly designed cartridges

We can also build blocks to customer's prints, or design to a specific circuit, wether it is a simple standard function, or a complete system.



MED-KAS HYDRAULICS, INC.
P.O. BOX 1163 1419 JOHN R
TROY, MI. 48099 TROY, MI. 48083
TEL: 248-585-3220 FAX # 248 585-0646
WEB SITE: www.med-kas.com E-MAIL: info@med-kas.com

SPECIFICATIONS SUBJECT TO CHANGE WITHOUT NOTICE

ORDERING CODE

UNG-25-10-X

CARTRIDGE BLOCK

VALVE SIZE

16-16MM

25-25MM

32-32MM

40-40MM

50-50MM

63-63MM

80-80MM

100-100MM

NOTE: LARGER SIZES
AVAILABLE UPON REQUEST

FLANGE CAPACITY

3-3000#-STANDARD

6-6000#-OPPTIONAL

STANDRARD FLANGE SIZE

16-6=3/4

25-10=1-1/4

32-12=1-1/2

40-16=2.000

50-20=2-1/2

63-24=3.000

80MM-SIZE AND PATTERN
PER REQUEST

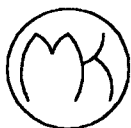
100MM-SIZE AND PATTERN
PER REQUEST

NOTE: OTHER FLANGE
SIZES ARE AVAILABLE
SOME ARE STOCKED

ALSO AVAILABLE:

PART NO. UNG-16-16-T
16MM CARTRIDGE WITH NO. 16
SAE STRAIGHT THREAD
CONNECTIONS ON A&B.

PART NO. UNG-25-20-T
25MM CARTRIDGE WITH NO. 20
SAE STRAIGHT THREAD
CONNECTIONS ON A&B.



MED-KAS HYDRAULICS, INC.

P.O. BOX 1163
TROY, MI. 48099

1419 JOHN R
TROY, MI. 48083

TEL: 248-585-3220

FAX # 248 585-0646

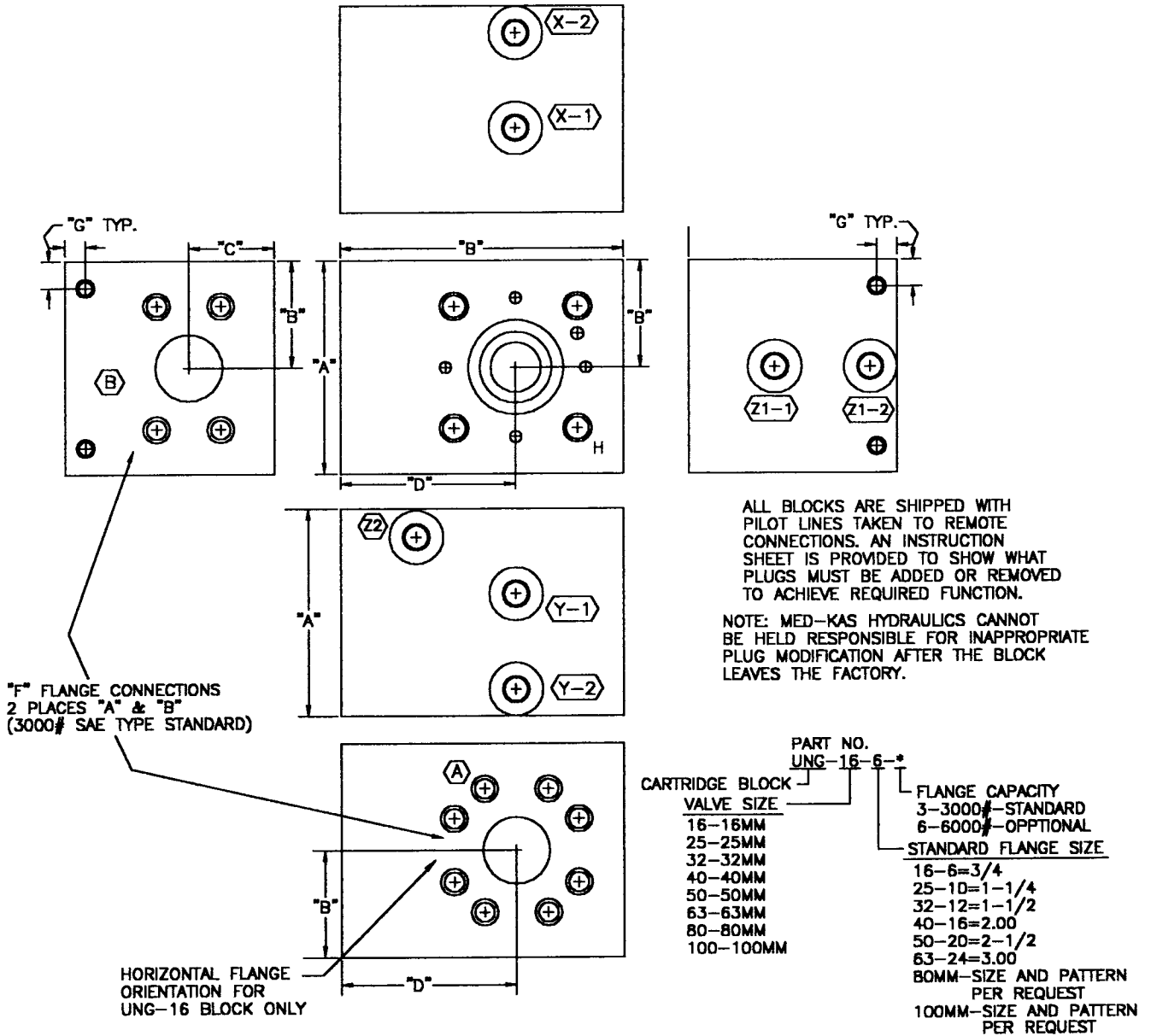
WEB SITE: www.med-kas.com

E-MAIL: info@med-kas.com

CARTRIDGE VALVE BODY

DIN 24342 STANDARD
DESIGNED WITH REMOVABLE PLUGS
TO ALLOW ON SITE PILOT ALTERATIONS

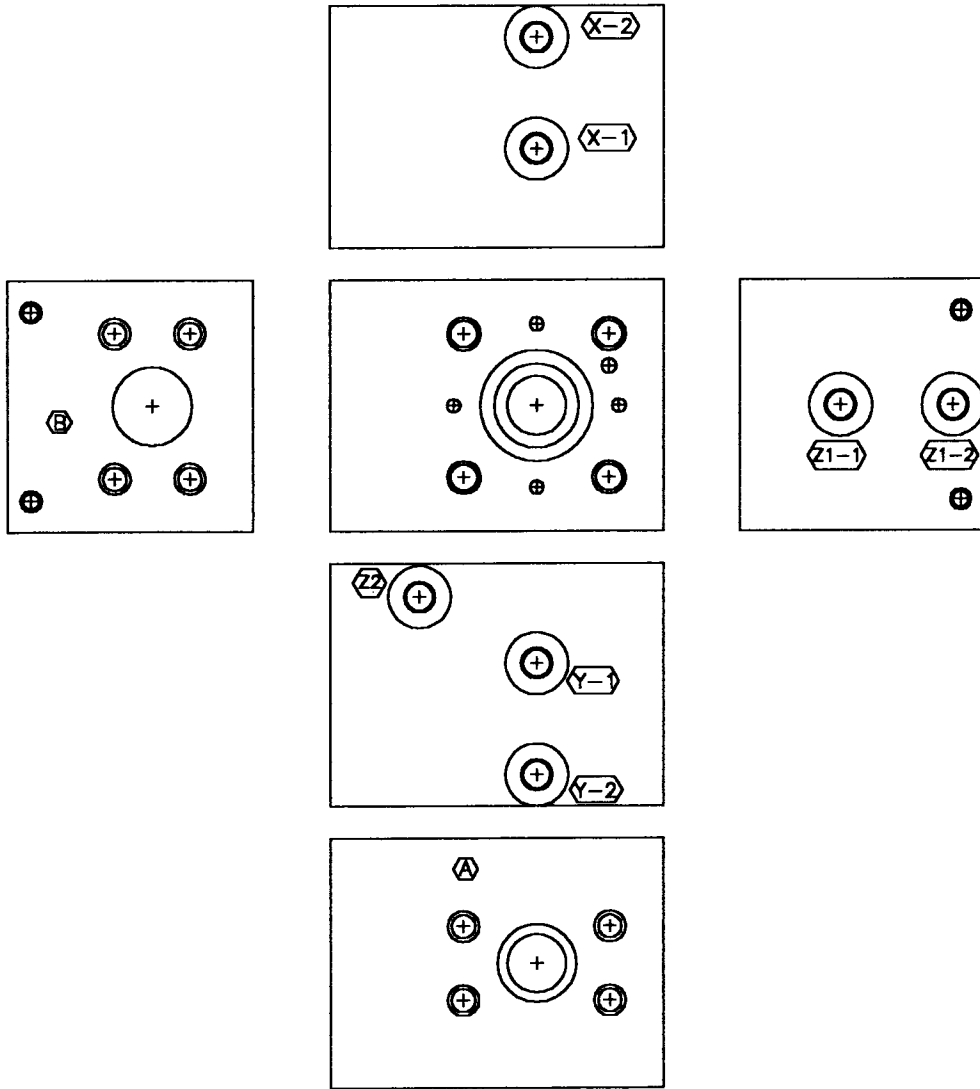
MODEL	A	B	C	D	E	F	G	H
UNG16-6-*	3.50	4.50	1.75	1.28	2.75	3/4	0.50	5/16-18
UNG25-10-*	4.00	5.25	2.00	1.59	3.25	1-1/4	0.50	1/2-13
UNG32-12-*	5.00	5.75	2.50	1.88	3.50	1-1/2	0.50	5/8-11
UNG40-16-*	5.50	6.50	2.75	2.31	3.75	2.00	0.50	3/4-10
UNG50-20-*	6.50	8.00	3.25	2.56	4.50	2-1/2	0.50	3/4-10
UNG63-24-*	8.00	10.00	4.00	3.41	6.00	3.00	0.50	1 1/4-7
UNG80-**-*	11.00	12.00	5.50	4.78	6.50	*.**	0.50	1-8
UNG100-**-*	13.00	14.00	6.50	5.59	7.50	*.**	0.75	



MED-KAS HYDRAULICS, INC.
P.O. BOX 1163 1419 JOHN R
TROY, MI. 48099 TROY, MI. 48083
TEL: 248-585-3220 FAX # 248 585-0646
WEB SITE: www.med-kas.com E-MAIL: info@med-kas.com

SPECIFICATIONS SUBJECT TO CHANGE WITHOUT NOTICE

PLUG CONFIGURATION INSTRUCTIONS



NOTE: MED-KAS HYDRAULICS CANNOT BE HELD RESPONSIBLE FOR INAPPROPRIATE PLUG MODIFICATION AFTER THE BLOCK LEAVES THE FACTORY.

T DESIGNATES STRAIGHT THREAD
P DESIGNATES PIPE THREAD

	EXTERNAL PLUG NO. 6 SAE	INTERNAL PLUG 1/16 NPT
PILOT CONNECTION	PORT TO RE-PLUG	PORT TO UNPLUG
X TO A	X2-T	X2-P
X TO B	X1-T	X1-P
Y TO A	Y2-T	Y2-P
Y TO B	Y1-T	Y1-P
Z1 TO A	Z1-2-T	Z1-2-P
Z1 TO B	Z1-1-T	Z1-1-P

BLOCKS ARE SHIPPED WITH ALL PLUGS INSTALLED FOR USE OF PILOT PORTS EXTERNALLY, REMOVE APPROPRIATE #6 SAE PLUG AS NEEDED.
EXAMPLE: X EXTERNAL - REMOVE EITHER X1 OR X2

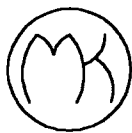
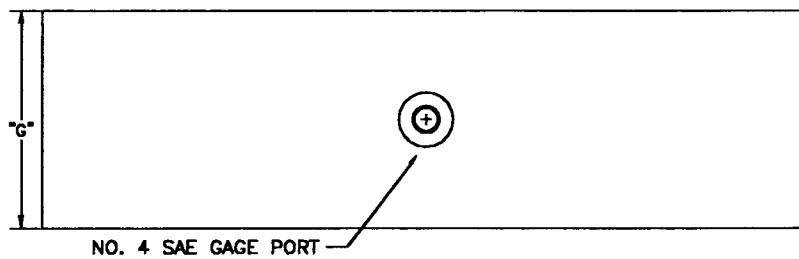
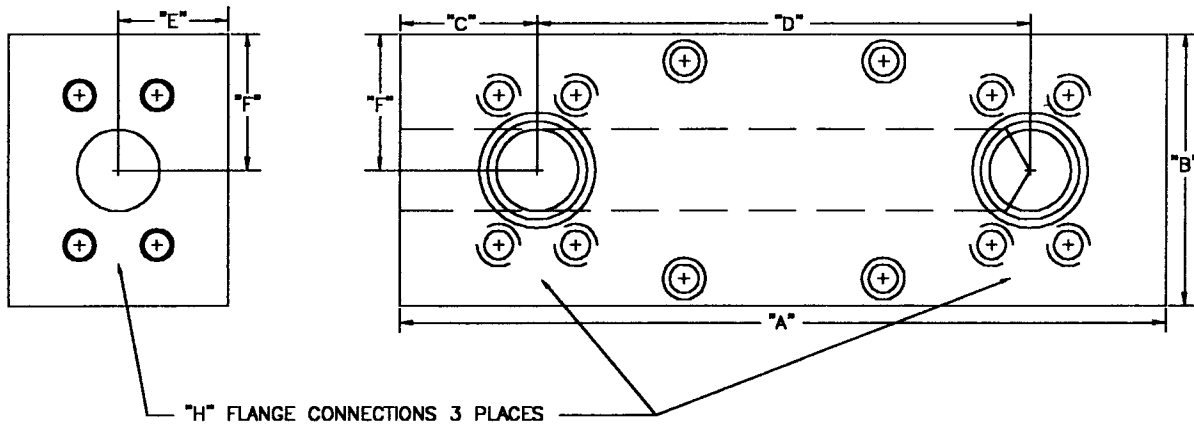


MED-KAS HYDRAULICS, INC.
 P.O. BOX 1163 1419 JOHN R
 TROY, MI. 48099 TROY, MI. 48083
 TEL: 248-585-3220 FAX # 248 585-0646
 WEB SITE: www.med-kas.com E-MAIL: info@med-kas.com

MOUNTING HEADER FOR UNG CARTRIDGE BLOCKS

(AVAILABLE FOR COMMON "A" PORTS ONLY)

MODEL	A	B	C	D	E	F	G	H
H2-16-6	8.50	3.50	1.75	5.00	1.12	1.75	2.25	3/4
H2-25-10	11.00	4.00	2.00	7.00	1.50	2.00	3.00	1-1/4
H2-32-12	14.00	5.00	2.50	9.00	2.00	2.50	4.00	1-1/2
H2-40-16	14.500	5.50	2.75	9.00	2.00	2.75	4.00	2.00
H2-50-20	17.50	6.50	3.25	11.00	2.50	3.25	5.00	2-1/2
H2-63-24	23.00	8.00	5.00	13.00	2.75	4.00	5.50	3.00



MED-KAS HYDRAULICS, INC.
 P.O. BOX 1163 1419 JOHN R
 TROY, MI. 48099 TROY, MI. 48083
 TEL: 248-585-3220 FAX # 248 585-0646
 WEB SITE: www.med-kas.com E-MAIL: info@med-kas.com

SPECIFICATIONS SUBJECT TO CHANGE WITHOUT NOTICE