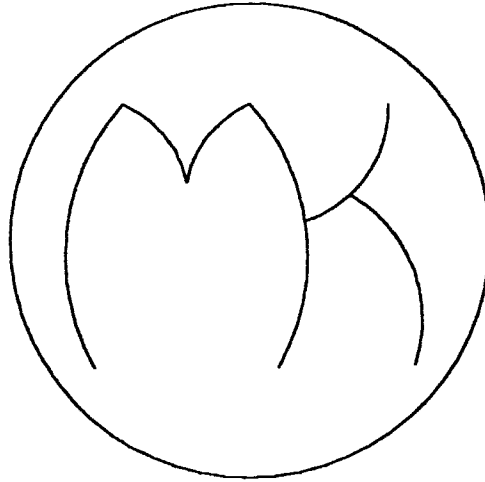


# ACCESSORIES



COVER PLATES

3-2 THRU 3-6

TAPPING PLATES

3-7 THRU 3-9

TRANSITION PLATES

3-10 THRU 3-18

MED-KAS HYDRAULICS, INC.

P.O. BOX 1163

TROY, MI. 48099

TEL: 248-585-3220

WEB SITE: [www.med-kas.com](http://www.med-kas.com)

1419 JOHN R

TROY, MI. 48083

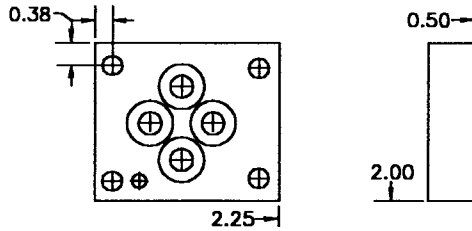
FAX # 248 585-0646

E-MAIL: [info@med-kas.com](mailto:info@med-kas.com)

# COVER PLATES

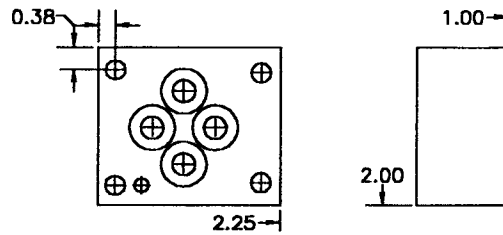
SEE TECHNICAL INFORMATION SECTION FOR VALVE MOUNTING DIMENSIONS

D03 PARALLEL CIRCUIT COVER PLATE  
PART NO. BY-C



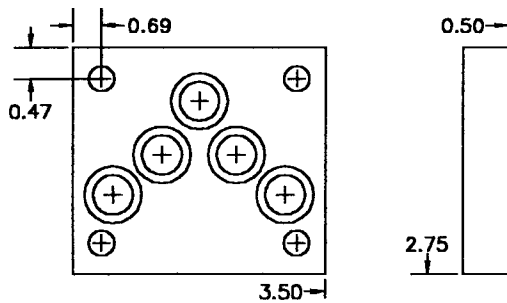
COVER PLATE INCLUDES:  
4-#10-24 X .875 SHCS  
4-#012 O'RINGS  
1-#125 X .375 ROLL PIN  
MATERIAL: STEEL

D03 SERIES CIRCUIT COVER PLATE  
PART NO. BY-CS



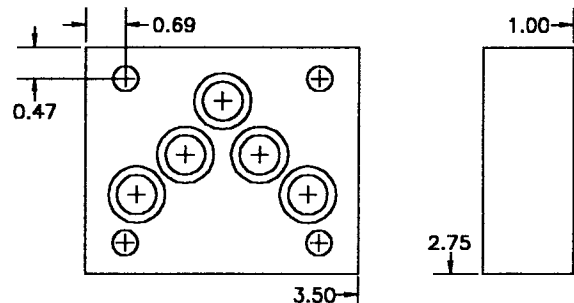
COVER PLATE INCLUDES:  
4-#10-24 X 1.375 SHCS  
4-#012 O'RINGS  
1-#125 X .375 ROLL PIN  
MATERIAL: STEEL

D05 PARALLEL CIRCUIT COVER PLATE  
PART NO. A-C



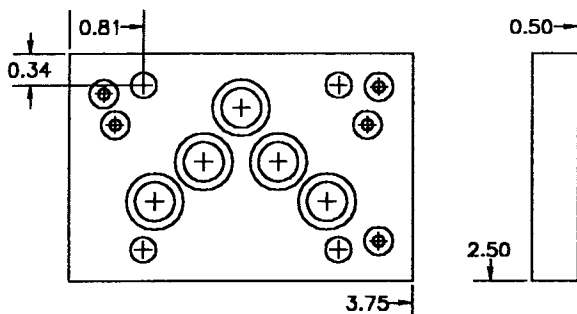
COVER PLATE INCLUDES:  
4-.250-20 X .875 SHCS  
5-#014 O'RINGS  
MATERIAL: STEEL

D05 SERIES CIRCUIT COVER PLATE  
PART NO. A-CS



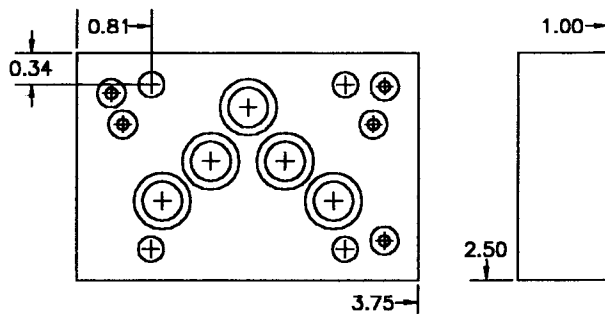
COVER PLATE INCLUDES:  
4-.250-20 X 1.375 SHCS  
5-#014 O'RINGS  
MATERIAL: STEEL

D05H PARALLEL CIRCUIT COVER PLATE  
PART NO. D05H-C



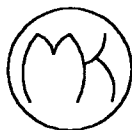
COVER PLATE INCLUDES:  
4-.250-20 X .875 SHCS  
5-#014 O'RINGS  
5-#008 O'RINGS  
MATERIAL: STEEL

D05H SERIES CIRCUIT COVER PLATE  
PART NO. D05H-CS



COVER PLATE INCLUDES:  
4-.250-20 X 1.375 SHCS  
5-#014 O'RINGS  
5-#008 O'RINGS  
MATERIAL: STEEL

THIS COVER PLATE IS DESIGNED TO SEAL BOTH THE  
USA STANDARD AND THE ISO STANDARD VALVE PATTERNS.



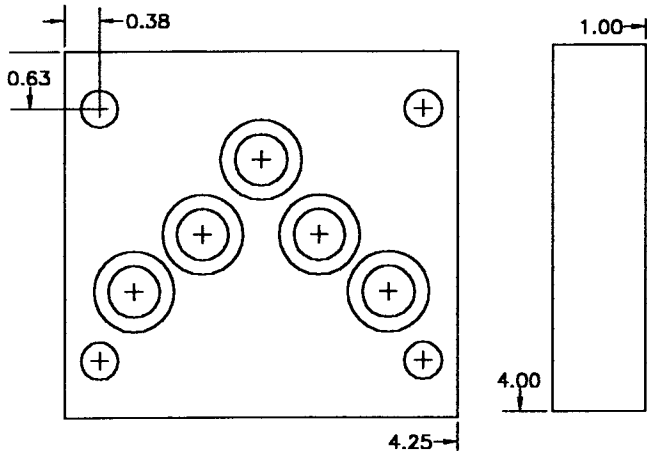
MED-KAS HYDRAULICS, INC.  
P.O. BOX 1163 1419 JOHN R  
TROY, MI. 48099 TROY, MI. 48083  
TEL: 248-585-3220 FAX # 248 585-0646  
WEB SITE: [www.med-kas.com](http://www.med-kas.com) E-MAIL: [info@med-kas.com](mailto:info@med-kas.com)

SPECIFICATIONS SUBJECT TO CHANGE WITHOUT NOTICE

# COVER PLATES

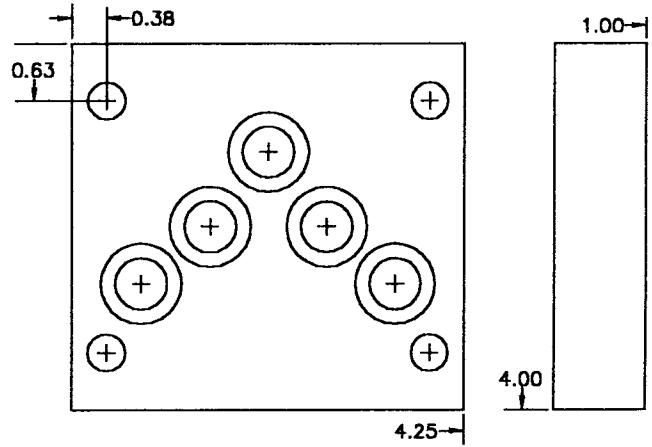
SEE TECHNICAL INFORMATION SECTION FOR VALVE MOUNTING DIMENSIONS

**D06 PARALLEL CIRCUIT COVER PLATE**  
PART NO. B-C



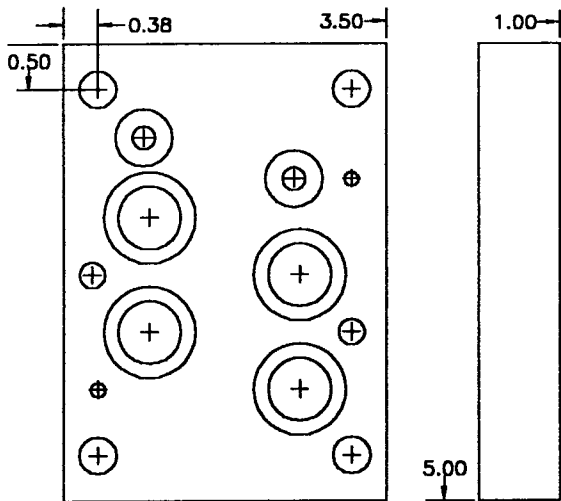
COVER PLATE INCLUDES:  
4-.375-16 X 1.500 SHCS  
5-#018 O'RINGS  
MATERIAL: STEEL

**D06 SERIES COVER PLATE**  
PART NO. B-CS



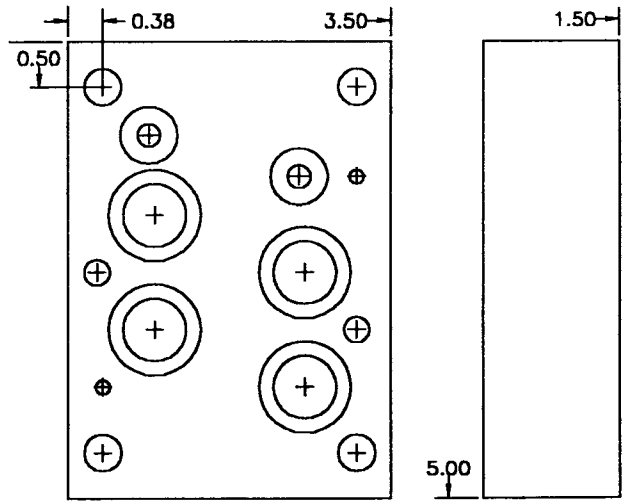
COVER PLATE INCLUDES:  
4-.375-16 X 1.500 SHCS  
5-#018 O'RINGS  
MATERIAL: STEEL

**D07 PARALLEL CIRCUIT COVER PLATE**  
PART NO. BE-C

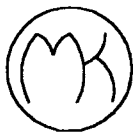


COVER PLATE INCLUDES:  
4-.375-16 X 1.500 SHCS  
2-.250-20 X 1.375 SHCS  
2-#109 O'RINGS  
4-#117 O'RINGS  
2-.125 X .375 ROLL PINS  
MATERIAL: STEEL

**D07 SERIES CIRCUIT COVER PLATE**  
BE-CS



COVER PLATE INCLUDES:  
4-.375-16 X 2.000 SHCS  
2-.250-20 X 1.875 SHCS  
2-#109 O'RINGS  
4-#117 O'RINGS  
2-.125 X .375 ROLL PINS  
MATERIAL: STEEL



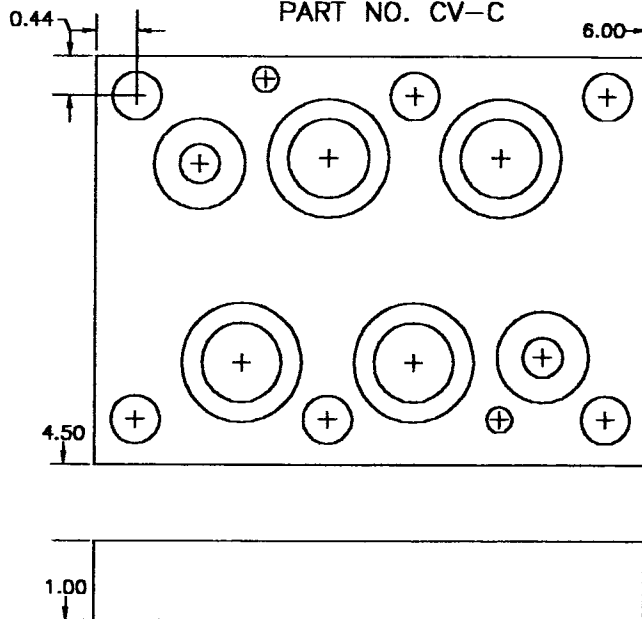
MED-KAS HYDRAULICS, INC.  
P.O. BOX 1163 1419 JOHN R  
TROY, MI. 48099 TROY, MI. 48083  
TEL: 248-585-3220 FAX # 248 585-0646  
WEB SITE: [www.med-kas.com](http://www.med-kas.com) E-MAIL: [info@med-kas.com](mailto:info@med-kas.com)

# COVER PLATES

SEE TECHNICAL INFORMATION SECTION FOR VALVE MOUNTING DIMENSIONS

## D08 PARALLEL CIRCUIT COVER PLATE

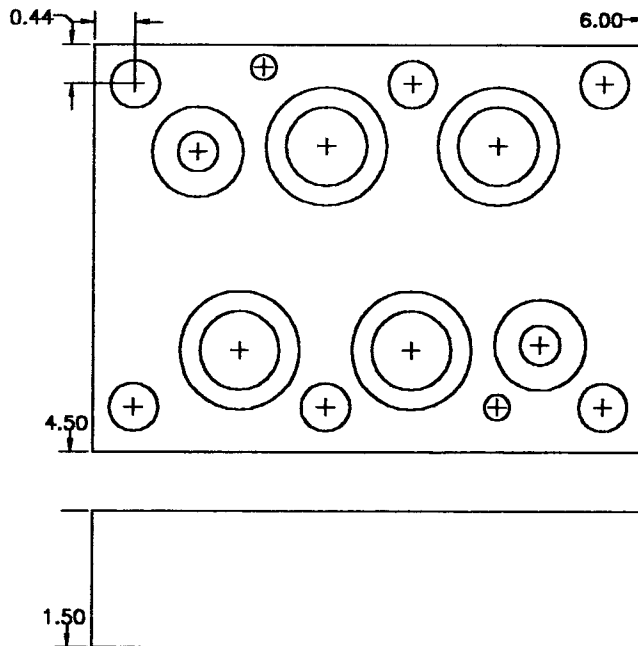
PART NO. CV-C



COVER PLATE INCLUDES:  
6-.500-13 X 2.25 SHCS  
2-#210 O'RINGS  
4-#214 O'RINGS  
2-.250 X .625 ROLL PINS  
MATERIAL: STEEL

## D08 SERIES CIRCUIT COVER PLATE

PART NO. CV-CS



COVER PLATE INCLUDES:  
6-.500-13 X 2.25 SHCS  
2-#210 O'RINGS  
4-#214 O'RINGS  
2-.250 X .625 ROLL PINS  
MATERIAL: STEEL



MED-KAS HYDRAULICS, INC.

P.O. BOX 1163

TROY, MI. 48099

TEL: 248-585-3220

WEB SITE: [www.med-kas.com](http://www.med-kas.com)

1419 JOHN R

TROY, MI. 48083

FAX # 248 585-0646

E-MAIL: [info@med-kas.com](mailto:info@med-kas.com)

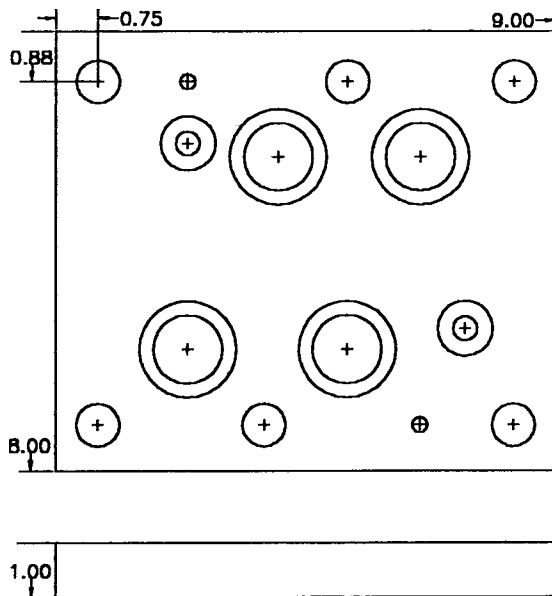
SPECIFICATIONS SUBJECT TO CHANGE WITHOUT NOTICE

# COVER PLATES

SEE TECHNICAL INFORMATION SECTION FOR VALVE MOUNTING DIMENSIONS

## D10 PARALLEL CIRCUIT COVER PLATE

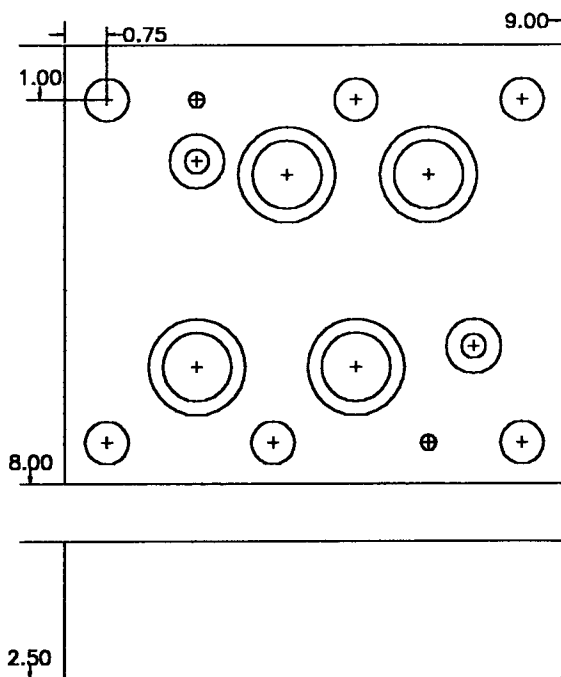
PART NO. D-C



COVER PLATE INCLUDES:  
6-.750-10 X 2.25 SHCS  
2-#210 O'RINGS  
4-#222 O'RINGS  
2-.250 X .625 ROLL PINS  
MATERIAL: STEEL

## D10 SERIES CIRCUIT COVER PLATE

PART NO. D-CS



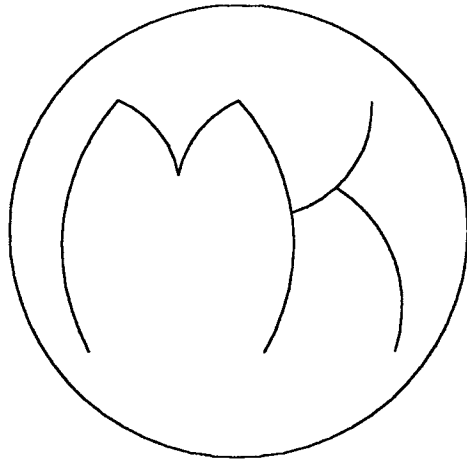
COVER PLATE INCLUDES:  
6-.750-10 X 3.50 SHCS  
2-#210 O'RINGS  
4-#222 O'RINGS  
2-.250 X .625 ROLL PINS  
MATERIAL: STEEL



MED-KAS HYDRAULICS, INC.  
P.O. BOX 1163 1419 JOHN R  
TROY, MI. 48099 TROY, MI. 48083  
TEL: 248-585-3220 FAX # 248 585-0646  
WEB SITE: [www.med-kas.com](http://www.med-kas.com) E-MAIL: [info@med-kas.com](mailto:info@med-kas.com)

SPECIFICATIONS SUBJECT TO CHANGE WITHOUT NOTICE

# COVER PLATES



## VALVE CODE

C-08  
C-09  
2F06  
2F07  
R08  
P06  
P08  
P10  
2FB07

## PART NUMBER

E-C  
F-C  
U-C  
X-C  
Q-C  
K-C  
L-C  
N-C  
DE-C

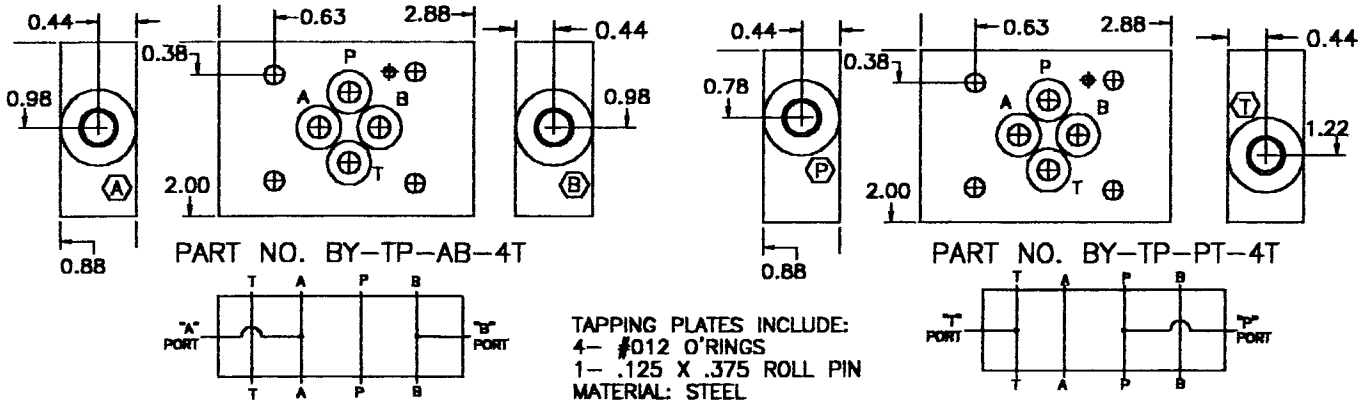
MED-KAS HYDRAULICS, INC.  
P.O. BOX 1163      1419 JOHN R  
TROY, MI. 48099      TROY, MI. 48083  
TEL: 248-585-3220      FAX # 248 585-0646  
WEB SITE: [www.med-kas.com](http://www.med-kas.com)      E-MAIL: [info@med-kas.com](mailto:info@med-kas.com)

SPECIFICATIONS SUBJECT TO CHANGE WITHOUT NOTICE

# TAPPING PLATES

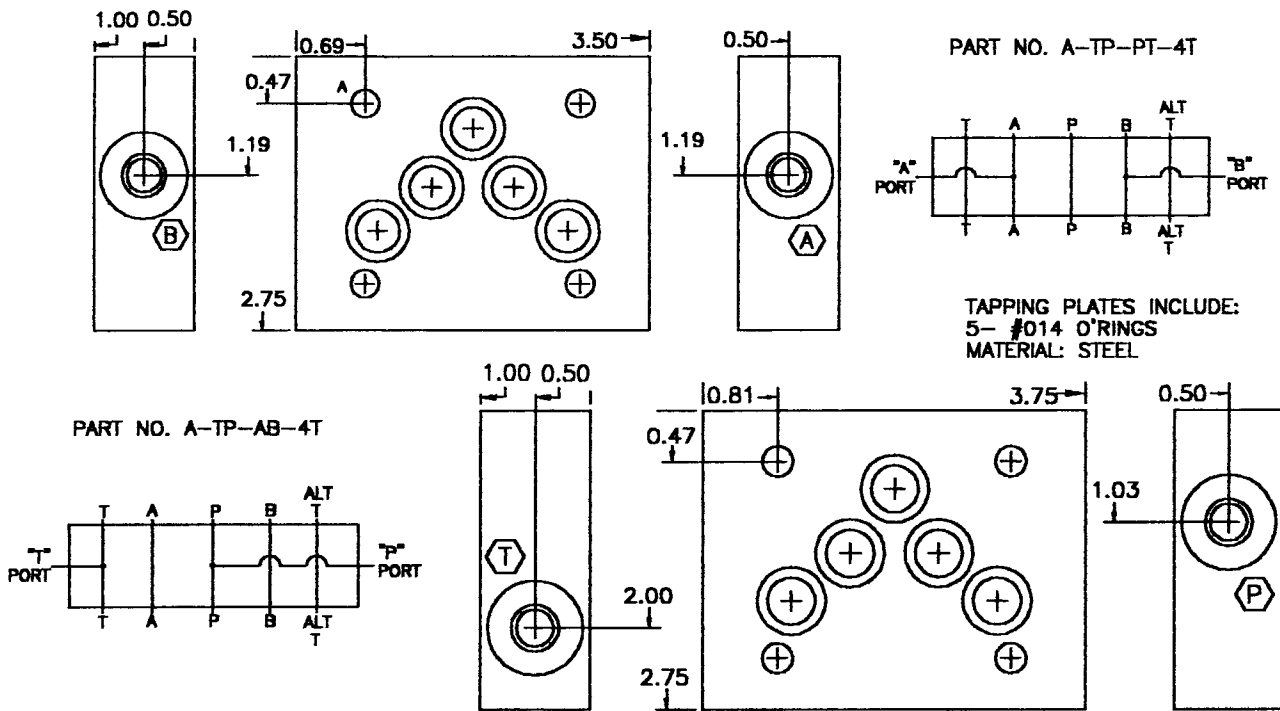
SEE TECHNICAL INFORMATION SECTION, FOR VALVE MOUNTING DIMENSIONS

D03 DESIGNATION **BY-TP-\*\*-4T** PORT TYPE  
 TAPPING PLATE DESIGNATION **4T-.437-20 SAE THREAD**  
**PORTS TO BE TAKEN EXTERNALLY**



NOTE: A PLATE IN THIS CONFIGURATION IS ALSO AVAILABLE FOR CUSTOM INTERNAL CONNECTIONS  
 PLEASE CONTACT THE MANUFACTURER FOR FURTHER DETAILS

D05 DESIGNATION **A-TP-\*\*-4T** PORT TYPE  
 TAPPING PLATE DESIGNATION **4T-.437-20 SAE THREAD**  
**PORTS TO BE TAKEN EXTERNALLY**



NOTE: A PLATE IN THIS CONFIGURATION IS ALSO AVAILABLE FOR CUSTOM INTERNAL CONNECTIONS  
 PLEASE CONTACT THE MANUFACTURER FOR FURTHER DETAILS



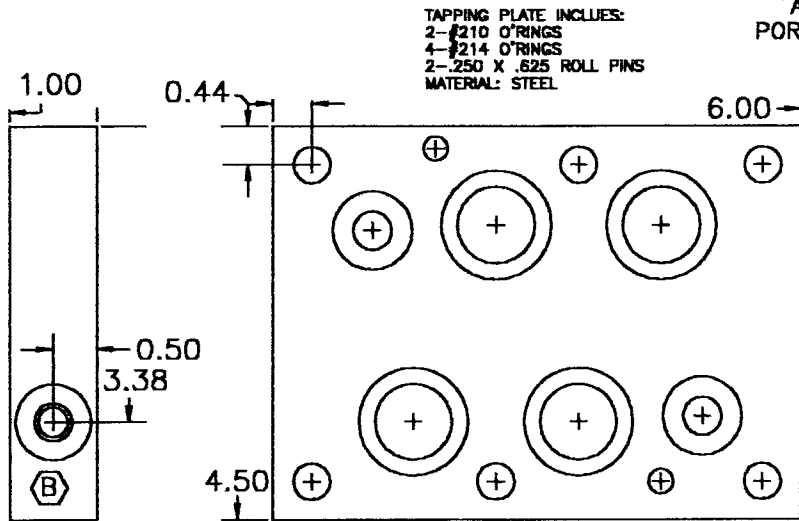
**MED-KAS HYDRAULICS, INC.**  
 P.O. BOX 1163 1419 JOHN R  
 TROY, MI. 48099 TROY, MI. 48083  
 TEL: 248-585-3220 FAX # 248 585-0646  
 WEB SITE: [www.med-kas.com](http://www.med-kas.com) E-MAIL: [info@med-kas.com](mailto:info@med-kas.com)

SPECIFICATIONS SUBJECT TO CHANGE WITHOUT NOTICE

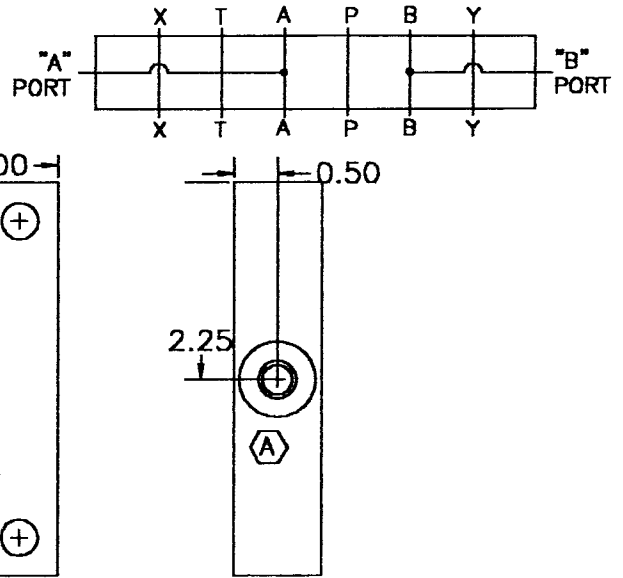
# TAPPING PLATES

SEE TECHNICAL INFORMATION SECTION FOR VALVE MOUNTING DIMENSIONS

PART NO. CV-TP-AB-4T  
 DOB DESIGNATION CV-TP-AB-4T  
 TAPPING PLATE DESIGNATION  
 PORT TYPE 4T-.437-20 SAE THREAD  
 PORTS TO BE TAKEN EXTERNALLY

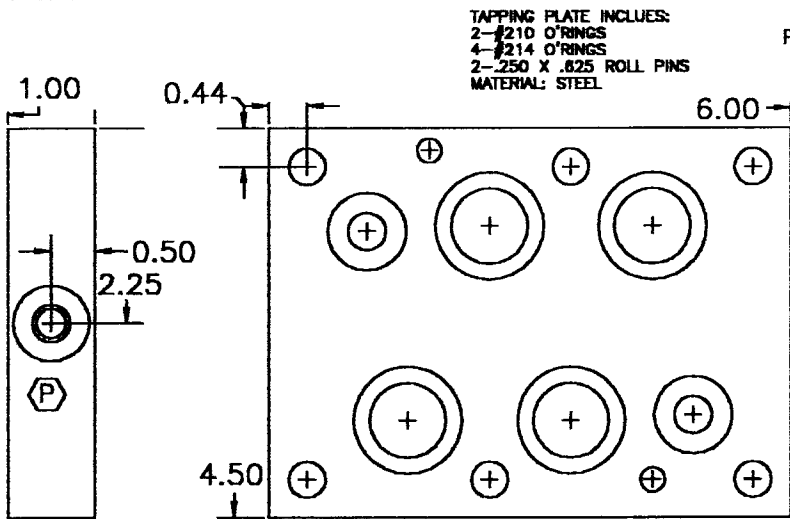


TAPPING PLATE INCLUDES:  
 2-#210 O'RINGS  
 4-#214 O'RINGS  
 2-.250 X .825 ROLL PINS  
 MATERIAL: STEEL

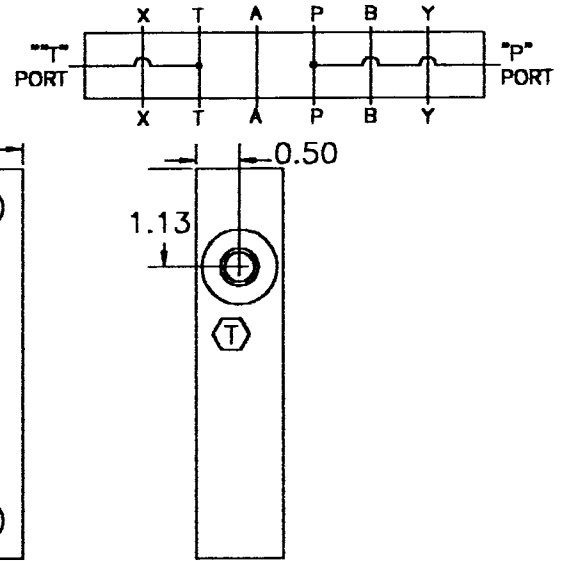


NOTE: A PLATE IN THIS CONFIGURATION IS ALSO AVAILABLE FOR CUSTOM INTERNAL CONNECTIONS  
 PLEASE CONTACT THE MANUFACTURE FOR FURTHER DETAILS

PART NO. CV-TP-PT-4T  
 DOB DESIGNATION CV-TP-PT-4T  
 TAPPING PLATE DESIGNATION  
 PORTS TO BE TAKEN EXTERNALLY  
 PORT TYPE 4T-.437-20 SAE THREAD



TAPPING PLATE INCLUDES:  
 2-#210 O'RINGS  
 4-#214 O'RINGS  
 2-.250 X .825 ROLL PINS  
 MATERIAL: STEEL



NOTE: A PLATE IN THIS CONFIGURATION IS ALSO AVAILABLE FOR CUSTOM INTERNAL CONNECTIONS  
 PLEASE CONTACT THE MANUFACTURE FOR FURTHER DETAILS



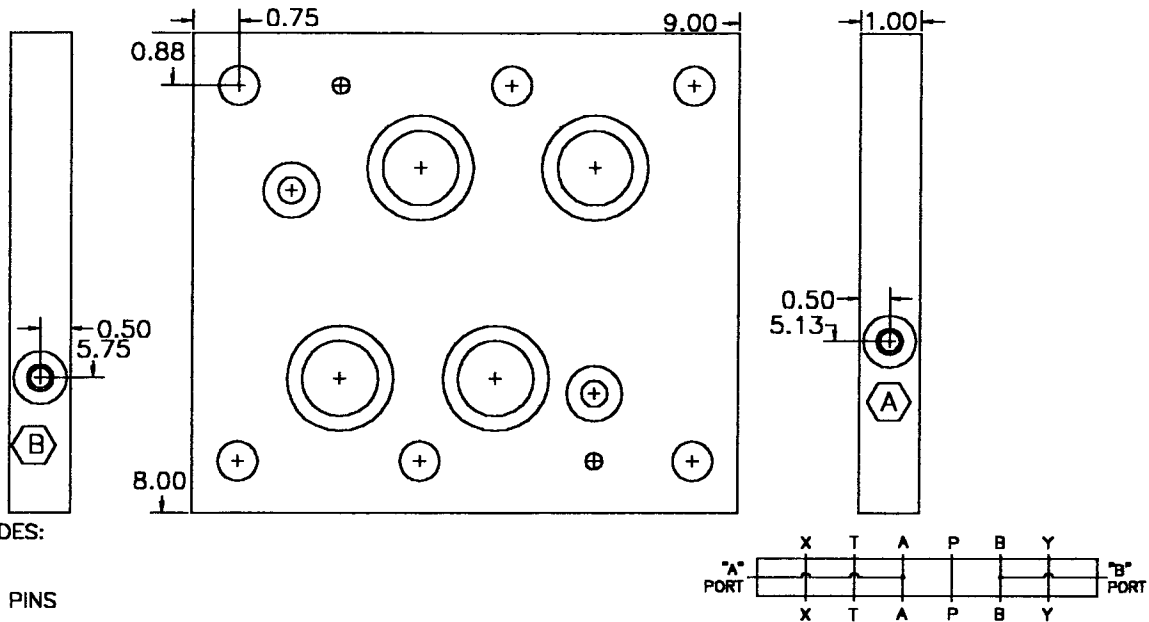
MED-KAS HYDRAULICS, INC.  
 P.O. BOX 1163 1419 JOHN R  
 TROY, MI. 48099 TROY, MI. 48083  
 TEL: 248-585-3220 FAX # 248 585-0646  
 WEB SITE: www.med-kas.com E-MAIL: info@med-kas.com

SPECIFICATIONS SUBJECT TO CHANGE WITHOUT NOTICE

# TAPPING PLATES

SEE TECHNICAL INFORMATION SECTION FOR VALVE MOUNTING DIMENSIONS

PART NO. D-TP-AB-4T  
 D10 DESIGNATION TAPPING PLATE DESIGNATION PORT TYPE 4T- .437-20 SAE THREAD  
 PORTS TO BE TAKEN EXTERNALLY

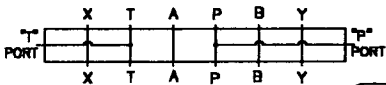
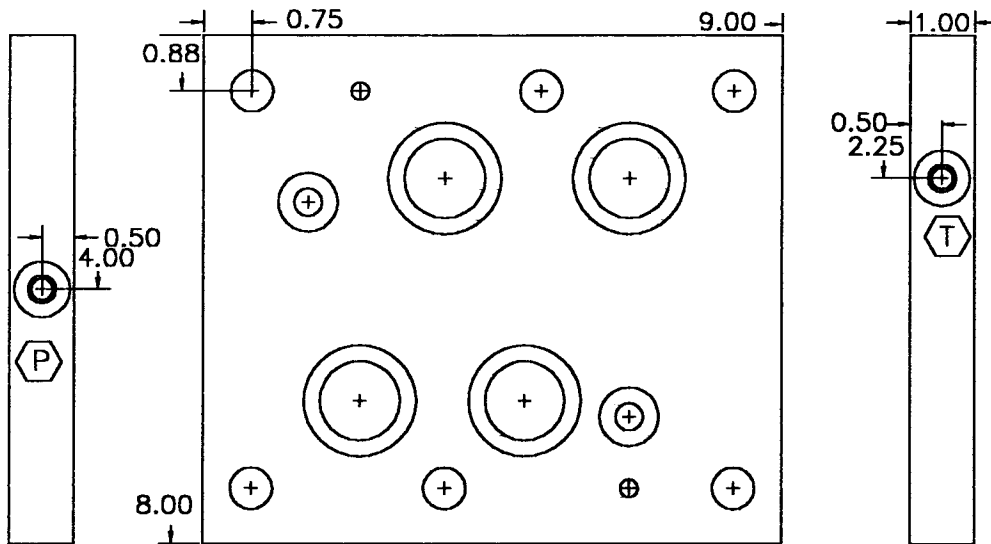


TAPPING PLATE INCLUDES:  
 2-#210 O'RINGS  
 4-#222 O'RINGS  
 2-.250 X .625 ROLL PINS  
 MATERIAL: STEEL

NOTE A PLATE IN THIS CONFIGURATION IS ALSO AVAILABLE FOR CUSTOM INTERNAL CONNECTIONS  
 PLEASE CONTACT THE MANUFACTURE FOR FURTHER DETAILS

TAPPING PLATE INCLUDES:  
 2-#210 O'RINGS  
 4-#222 O'RINGS  
 2-.250 X .625 ROLL PINS  
 MATERIAL: STEEL

PART NO. D-TP-PT-4T  
 D10 DESIGNATION TAPPING PLATE DESIGNATION PORT TYPE 4T- .437-20 SAE THREAD  
 PORTS TO BE TAKEN EXTERNALLY



NOTE A PLATE IN THIS CONFIGURATION IS ALSO AVAILABLE FOR CUSTOM INTERNAL CONNECTIONS  
 PLEASE CONTACT THE MANUFACTURE FOR FURTHER DETAILS



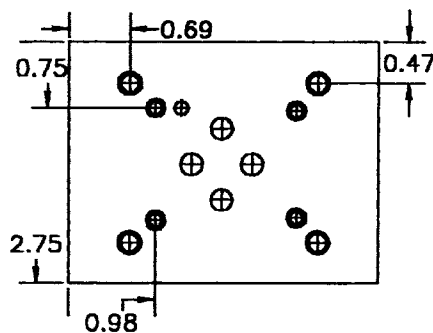
MED-KAS HYDRAULICS, INC.  
 P.O. BOX 1163 1419 JOHN R  
 TROY, MI. 48099 TROY, MI. 48083  
 TEL: 248-585-3220 FAX # 248 585-0646  
 WEB SITE: www.med-kas.com E-MAIL: info@med-kas.com

# TRANSITION PLATES

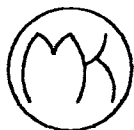
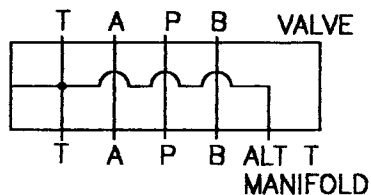
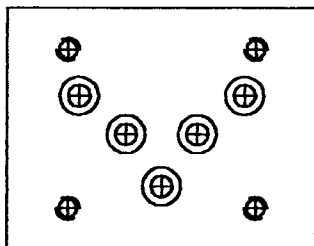
SEE TECHNICAL INFORMATION SECTION FOR VALVE MOUNTING DIMENSIONS

ADAPTS D03 VALVE TO D05 INTERFACE

PART NO. BY-A OR A-BY



TRANSITION PLATE INCLUDE:  
4- .250-20 X 1.375 SHCS  
5- #014 O'RINGS  
MATERIAL: STEEL

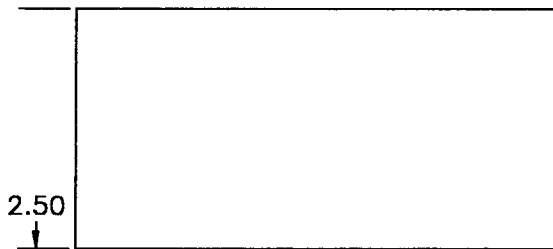
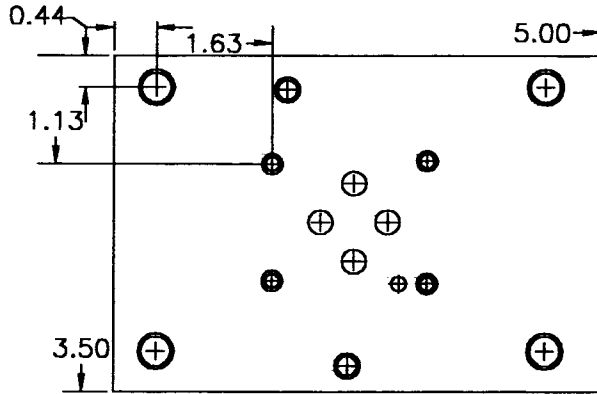


MED-KAS HYDRAULICS, INC.  
P.O. BOX 1163 1419 JOHN R  
TROY, MI. 48099 TROY, MI. 48083  
TEL: 248-585-3220 FAX # 248 585-0646  
WEB SITE: www.med-kas.com E-MAIL: info@med-kas.com

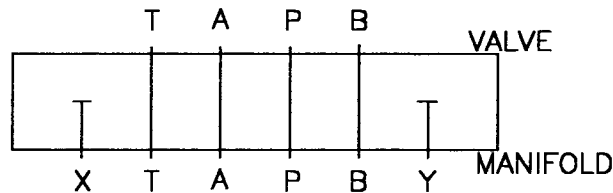
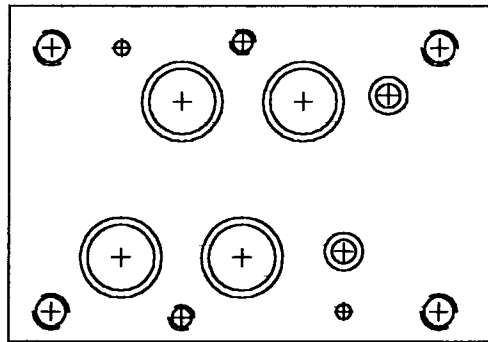
SPECIFICATIONS SUBJECT TO CHANGE WITHOUT NOTICE

# TRANSITION PLATES

SEE TECHNICAL INFORMATION SECTION FOR VALVE MOUNTING DIMENSIONS  
 ADAPTS D03 VALVE TO D07 INTERFACE  
 PART NO. BY-BE



TRANSITION PLATE INCLUDES:  
 4- .375-16 X 2.500 SHCS  
 2- .250-20 X 2.375 SHCS  
 2- #109 O'RINGS  
 4- #117 O'RINGS  
 2- .125 X .375 ROLL PINS  
 MATERIAL: STEEL



MED-KAS HYDRAULICS, INC.  
 P.O. BOX 1163 1419 JOHN R  
 TROY, MI. 48099 TROY, MI. 48083  
 TEL: 248-585-3220 FAX # 248 585-0646  
 WEB SITE: [www.med-kas.com](http://www.med-kas.com) E-MAIL: [info@med-kas.com](mailto:info@med-kas.com)

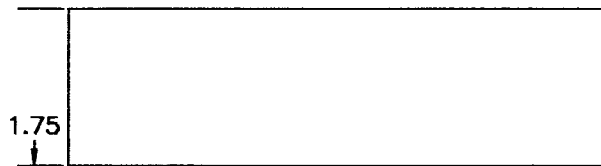
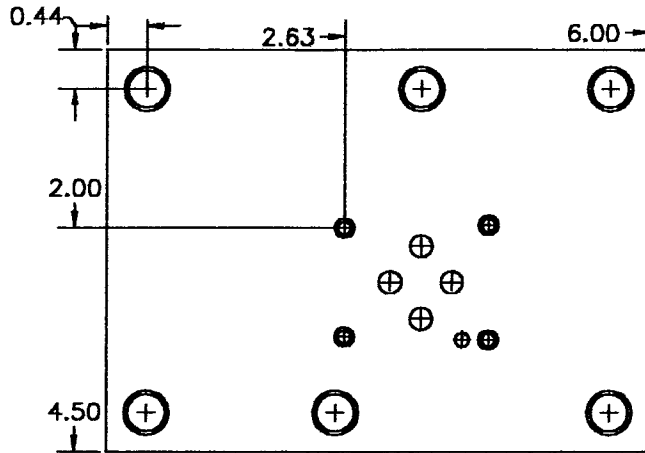
SPECIFICATIONS SUBJECT TO CHANGE WITHOUT NOTICE

# TRANSITION PLATES

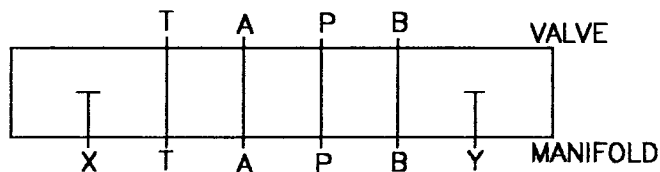
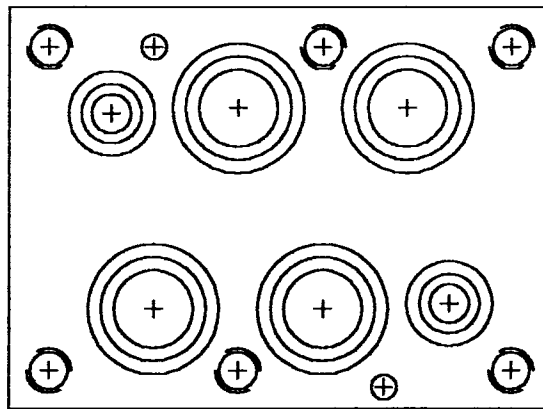
SEE TECHNICAL INFORMATION SECTION FOR VALVE MOUNTING DIMENSIONS

ADAPTS D03 VALVE TO D08 INTERFACE

PART NO. BY-CV



TRANSITION PLATE INCLUDES:  
 6- .500-13 X 1.750 SHCS  
 2- #210 O'RINGS  
 4- #214 O'RINGS  
 2- .250 X .625 ROLL PINS  
 MATERIAL: STEEL



MED-KAS HYDRAULICS, INC.  
 P.O. BOX 1163 1419 JOHN R  
 TROY, MI. 48099 TROY, MI. 48083  
 TEL: 248-585-3220 FAX # 248 585-0646  
 WEB SITE: www.med-kas.com E-MAIL: info@med-kas.com

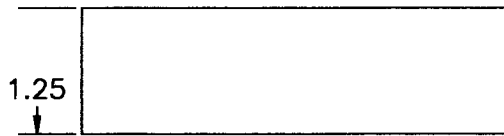
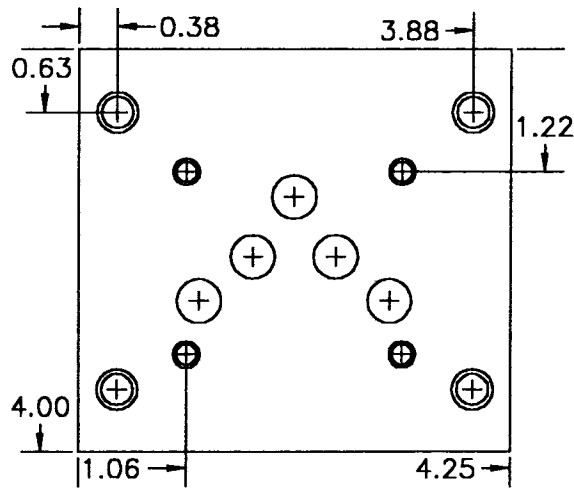
SPECIFICATIONS SUBJECT TO CHANGE WITHOUT NOTICE

# TRANSITION PLATES

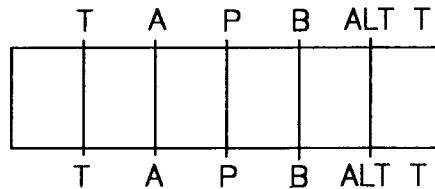
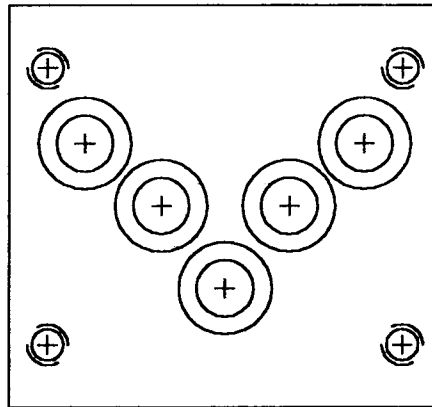
SEE TECHNICAL INFORMATION SECTION FOR VALVE MOUNTING DIMENSIONS

ADAPTS D05 VALVE TO D06 INTERFACE

PART NO. A-B



TRANSITION PLATE INCLUDES:  
 4- .375-16 X 1.250 SHCS  
 5- #115 O'RINGS  
 MATERIAL: STEEL



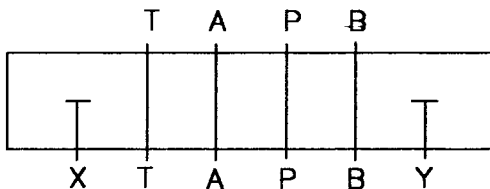
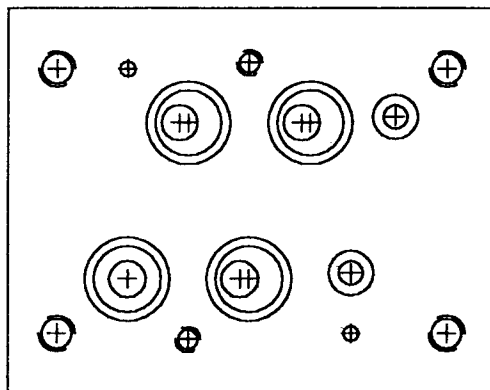
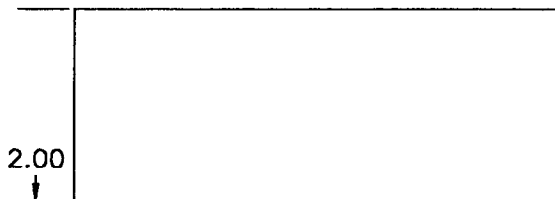
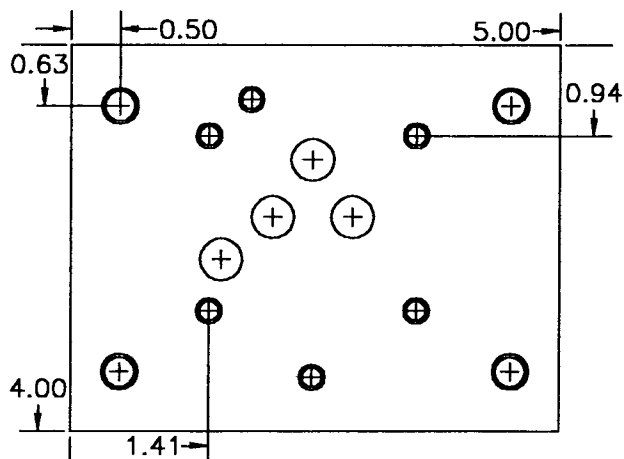
MED-KAS HYDRAULICS, INC.  
 P.O. BOX 1163 1419 JOHN R  
 TROY, MI. 48099 TROY, MI. 48083  
 TEL: 248-585-3220 FAX # 248 585-0646  
 WEB SITE: [www.med-kas.com](http://www.med-kas.com) E-MAIL: [info@med-kas.com](mailto:info@med-kas.com)

# TRANSITION PLATES

SEE TECHNICAL INFORMATION SECTION FOR VALVE MOUNTING DIMENSIONS

ADAPTS D05 VALVE TO D07 INTERFACE

PART NO. A-BE



TRANSITION PLATE INCLUDES:  
 4- .375-16 X 2.000 SHCS  
 2- .250-20 X 1.875 SHCS  
 2- #109 O'RINGS  
 4- #117 O'RINGS  
 2- .125 X .375 ROLL PINS  
 MATERIAL: STEEL

NOTE: THIS IS THE SAME CONFIGURATION FOR D05H VALVES  
 PLEASE CONTACT THE MANUFACTURER FOR SPECIFIC APPLICATIONS



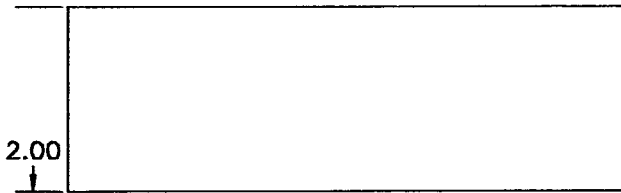
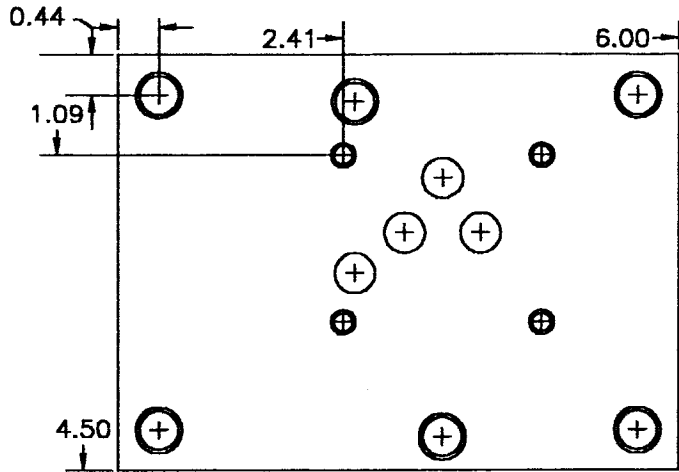
MED-KAS HYDRAULICS, INC.  
 P.O. BOX 1163 1419 JOHN R  
 TROY, MI. 48099 TROY, MI. 48083  
 TEL: 248-585-3220 FAX # 248 585-0646  
 WEB SITE: [www.med-kas.com](http://www.med-kas.com) E-MAIL: [info@med-kas.com](mailto:info@med-kas.com)

SPECIFICATIONS SUBJECT TO CHANGE WITHOUT NOTICE

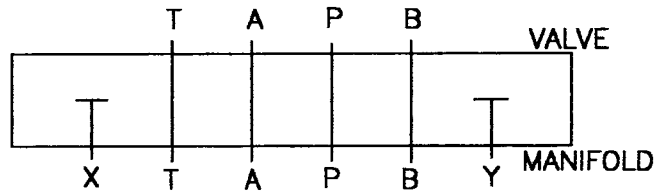
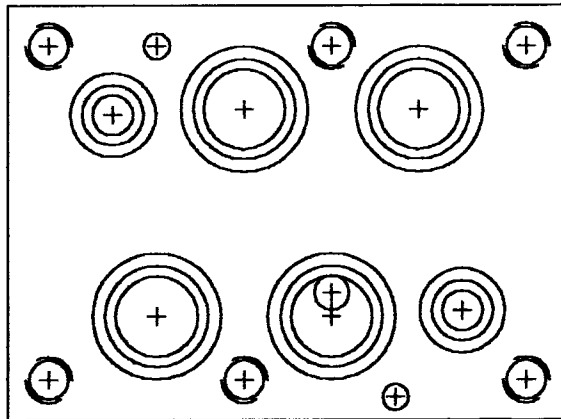
# TRANSITION PLATES

SEE TECHNICAL INFORMATION SECTION FOR VALVE MOUNTING DIMENSIONS

ADAPTS D05 VALVE TO D08 INTERFACE  
PART NO. A-CV



TRANSITION PLATE INCLUDES:  
6- .500-13 X 2.25 SHCS  
2- #210 O'RINGS  
4- #214 O'RINGS  
2- .250 X .625 ROLL PINS  
MATERIAL: STEEL



NOTE: THIS IS THE SAME CONFIGURATION FOR D05H VALVES  
PLEASE CONTACT THE MANUFACTURER FOR SPECIFIC APPLICATIONS



MED-KAS HYDRAULICS, INC.  
P.O. BOX 1163 1419 JOHN R  
TROY, MI. 48099 TROY, MI. 48083  
TEL: 248-585-3220 FAX # 248 585-0646  
WEB SITE: [www.med-kas.com](http://www.med-kas.com) E-MAIL: [info@med-kas.com](mailto:info@med-kas.com)

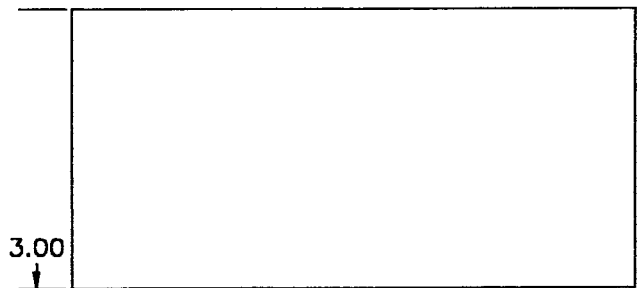
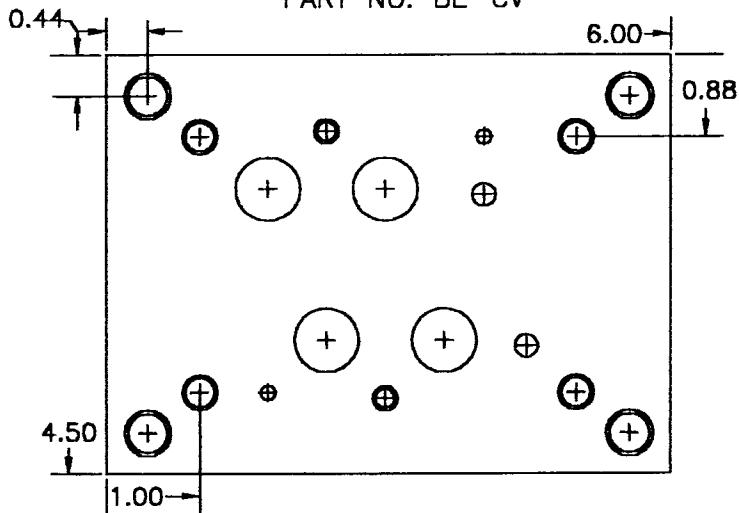
SPECIFICATIONS SUBJECT TO CHANGE WITHOUT NOTICE

# TRANSITION PLATES

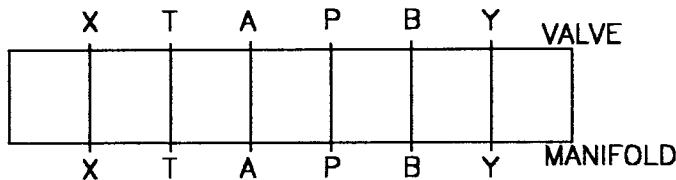
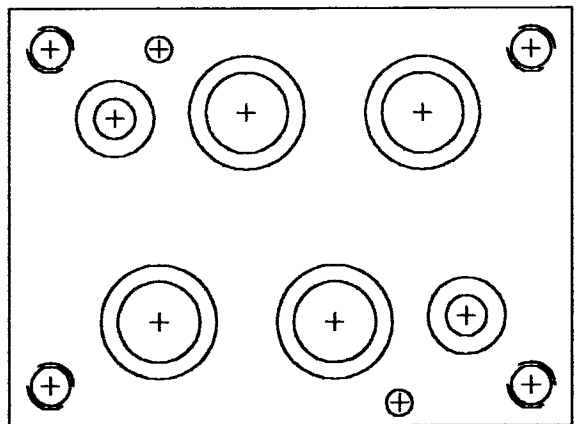
SEE TECHNICAL INFORMATION SECTION FOR VALVE MOUNTING DIMENSIONS

ADAPTS D07 VALVE TO D08 INTERFACE

PART NO. BE-CV



TRANSITION PLATE INCLUDES:  
 4- .500-13 X 2.750 SHCS  
 2- #210 O'RINGS  
 4- #214 O'RINGS  
 2- .250 X .625 ROLL PINS  
 MATERIAL: STEEL



MED-KAS HYDRAULICS, INC.  
 P.O. BOX 1163 1419 JOHN R  
 TROY, MI. 48099 TROY, MI. 48083  
 TEL: 248-585-3220 FAX # 248 585-0646  
 WEB SITE: [www.med-kas.com](http://www.med-kas.com) E-MAIL: [info@med-kas.com](mailto:info@med-kas.com)

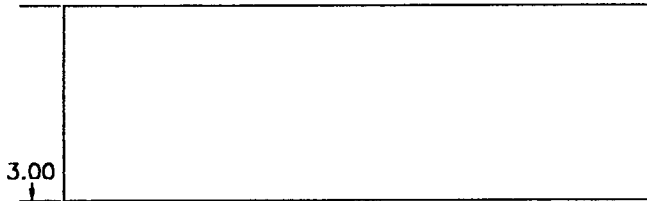
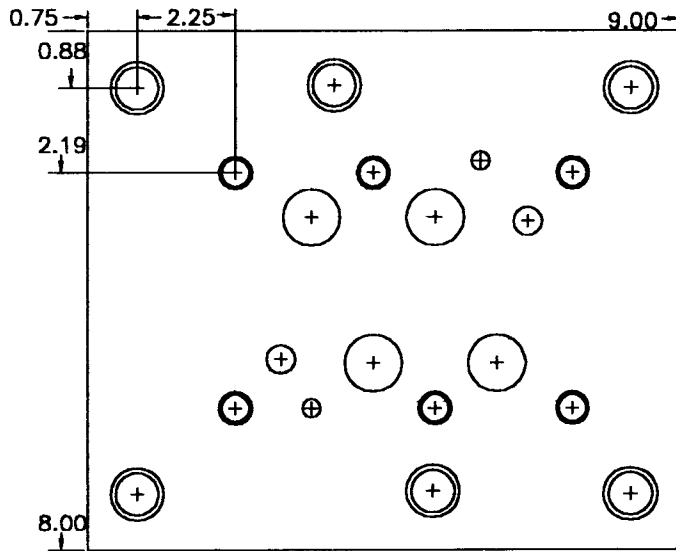
SPECIFICATIONS SUBJECT TO CHANGE WITHOUT NOTICE

# TRANSITION PLATES

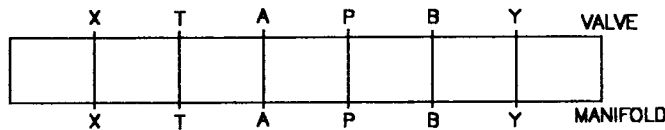
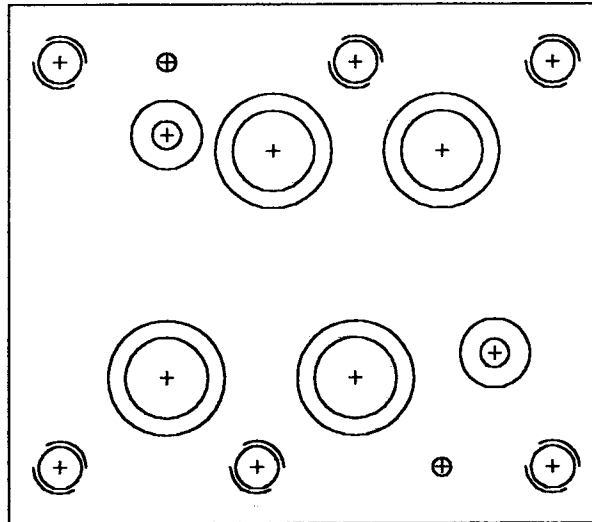
SEE TECHNICAL INFORMATION SECTION FOR VALVE MOUNTING DIMENSIONS

ADAPTS D08 VALVE TO D10 INTERFACE

PART NO. CV-D



TRANSITION PLATE INCLUDES:  
 6- .750 X 3.000 SHCS  
 2- #210 O'RINGS  
 4- #222 O'RINGS  
 2- .250 X .625 ROLL PINS  
 MATERIAL: STEEL



MED-KAS HYDRAULICS, INC.  
 P.O. BOX 1163 1419 JOHN R  
 TROY, MI. 48099 TROY, MI. 48083  
 TEL: 248-585-3220 FAX # 248 585-0646  
 WEB SITE: [www.med-kas.com](http://www.med-kas.com) E-MAIL: [info@med-kas.com](mailto:info@med-kas.com)

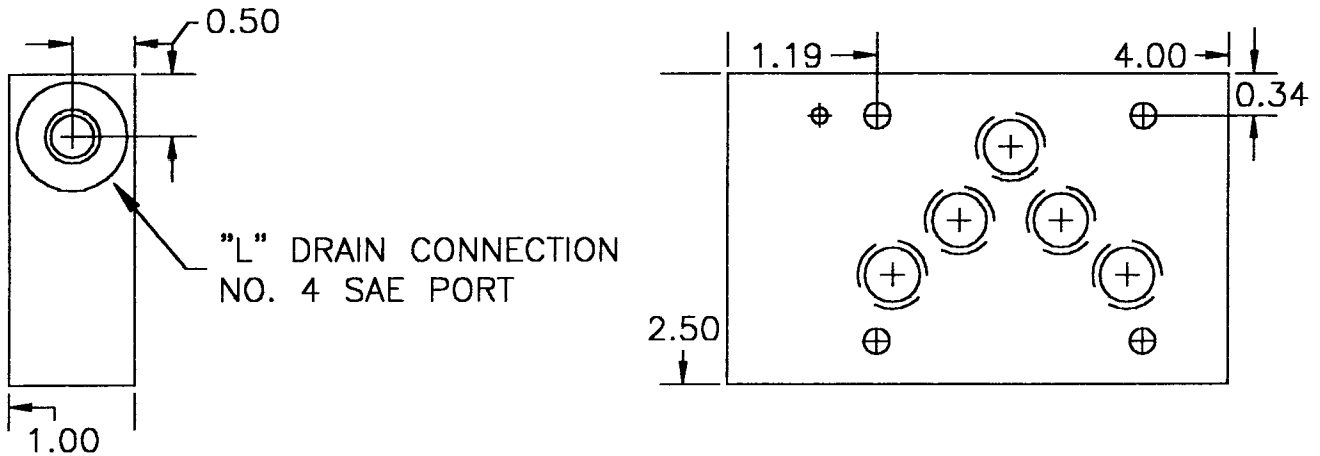
SPECIFICATIONS SUBJECT TO CHANGE WITHOUT NOTICE

# TRANSITION PLATES

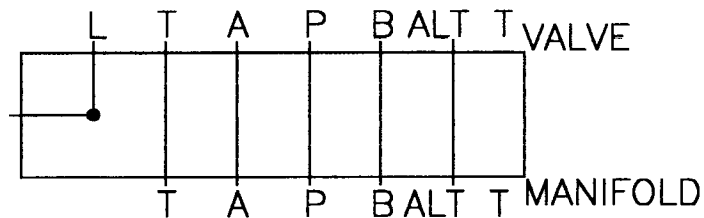
SEE TECHNICAL INFORMATION SECTION FOR VALVE MOUNTING DIMENSIONS

ADAPTS D05 VALVE WITH "L" DRAIN TO D05 INTERFACE

PART NO. JE-A



TRANSITION PLATE INCLUDES:  
5- #014 O'RINGS  
MATERIAL: STEEL



MED-KAS HYDRAULICS, INC.  
P.O. BOX 1163 1419 JOHN R  
TROY, MI. 48099 TROY, MI. 48083  
TEL: 248-585-3220 FAX # 248 585-0646  
WEB SITE: [www.med-kas.com](http://www.med-kas.com) E-MAIL: [info@med-kas.com](mailto:info@med-kas.com)

SPECIFICATIONS SUBJECT TO CHANGE WITHOUT NOTICE