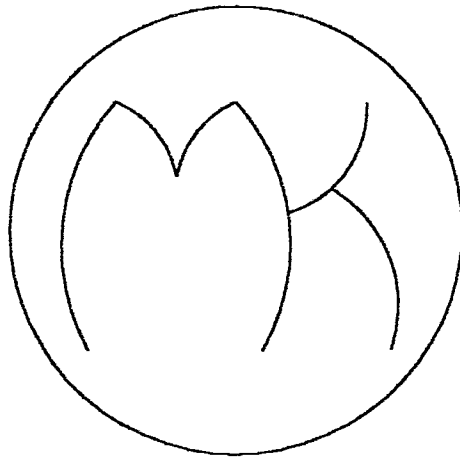


SUBPLATES



NFPA PATTERN	MED-KAS MODEL CODE	PAGE NO.
D03	BY	4-2,4-3
D05	A	4-4,4-5,4-6
D05-H	JE + KC	4-7,4-8
D06	B	4-9
D07	BE	4-10
D08	CV	4-11,4-12,4-13
D10	D	4-14,4-15
2F06	U	4-16
2F07	X	4-17
C08	E	4-18
C09	F	4-18
R08	Q	4-19
P06	K	4-20
P08	L	4-21
P10	N	4-22

NON NFPA STANDARD SUBPLATES

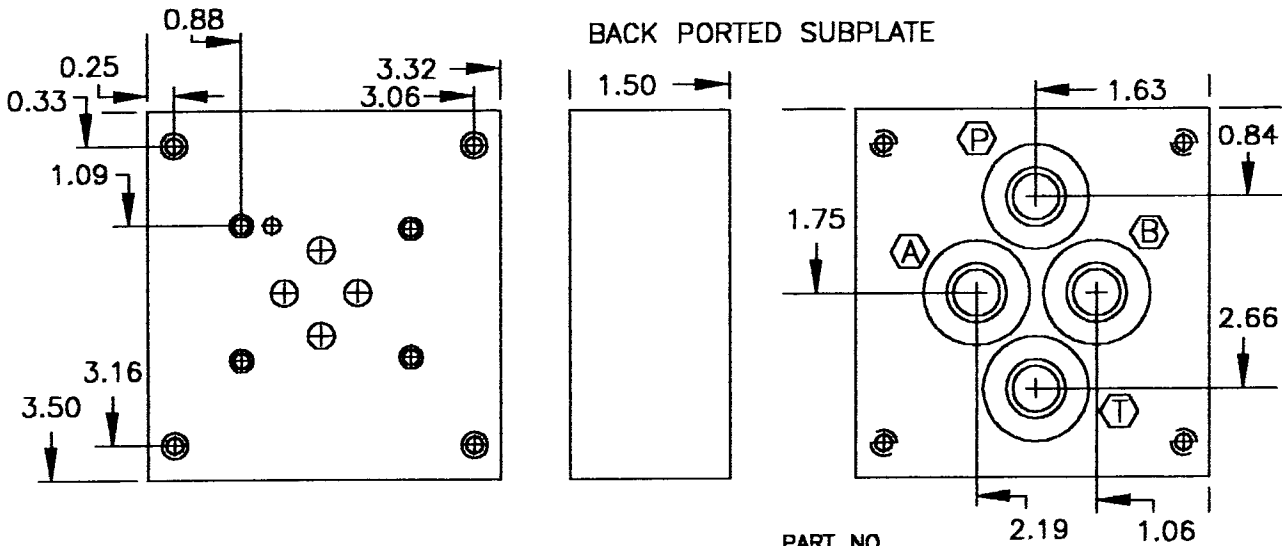
CPG-6	DE	4-23
CG-06	BL	4-24

MED-KAS HYDRAULICS, INC.
 P.O. BOX 1163 1419 JOHN R
 TROY, MI. 48099 TROY, MI. 48083
 TEL: 248-585-3220 FAX # 248 585-0646
 WEB SITE: www.med-kas.com E-MAIL: info@med-kas.com

SPECIFICATIONS SUBJECT TO CHANGE WITHOUT NOTICE

D03 SUBPLATES

SEE TECHNICAL INFORMATION SECTION FOR VALVE MOUNTING DIMENSIONS



SUBPLATE MOUNTING HOLES
TO ACCOMMODATE #10-24
SOCKET HEAD CAP SCREWS

SAE THREAD	.562-18=6T	.750-16=8T
NPTF	.375-18=6	.500-14=8

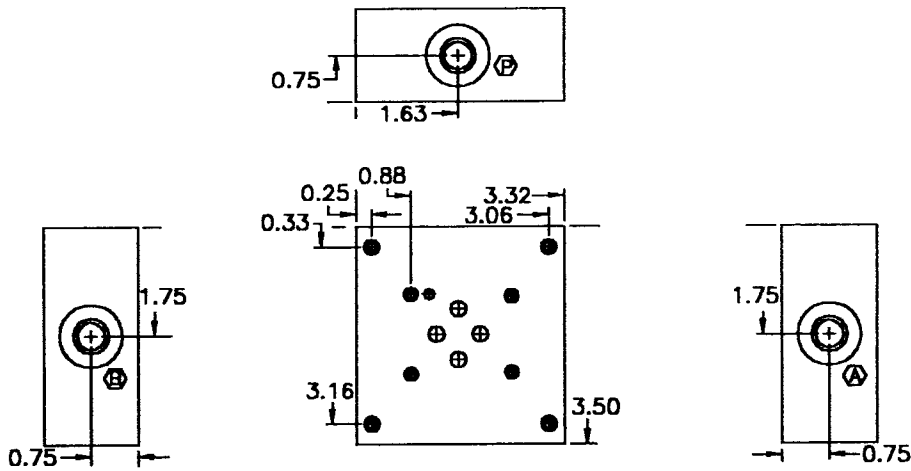
PART NO.
BY-6-* -B

D03 DESIGNATION

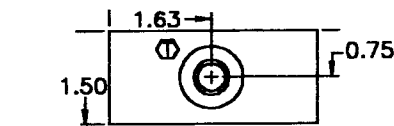
BACK PORTED
(OMIT FOR SIDE PORTED)

PORT TYPE
T - SAE THREAD
OMIT FOR NPTF

SIDE PORTED SUBPLATE



SUBPLATE MOUNTING HOLES
TO ACCOMMODATE #10-24
SOCKET HEAD CAP SCREWS



D03 DESIGNATION

SAE THREAD	.562-18=6T	.750-16=8T
NPTF	.375-18=6	.500-14=8

PART NO.
BY-6-*

PORT TYPE
T - SAE THREAD
OMIT FOR NPTF

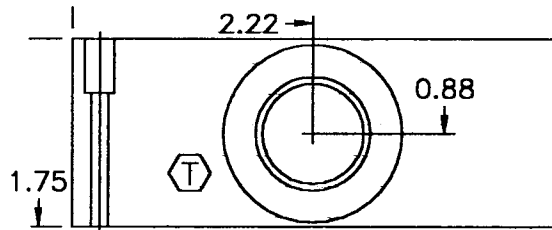
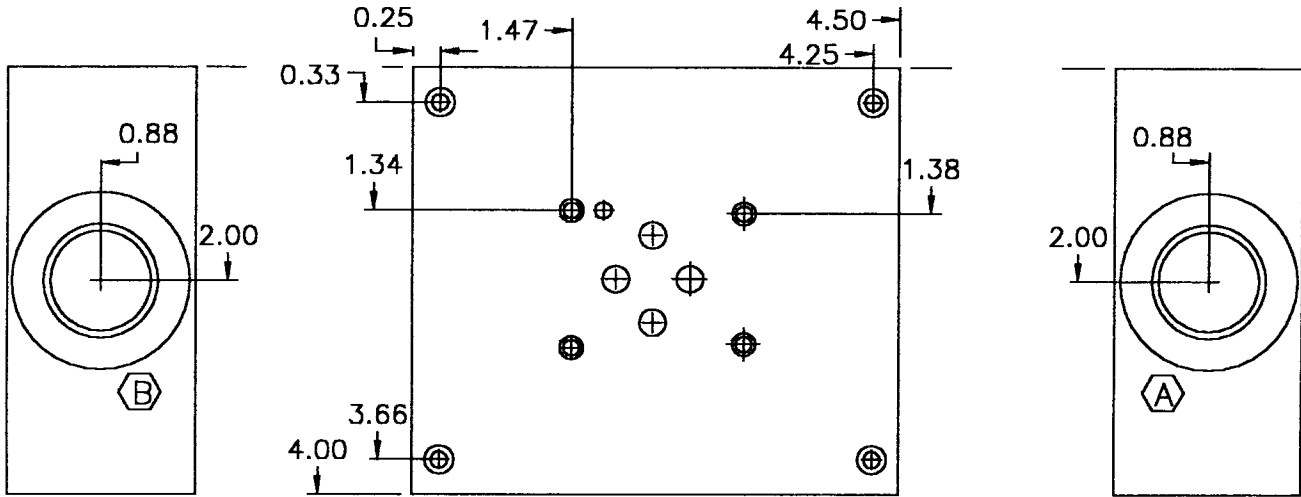
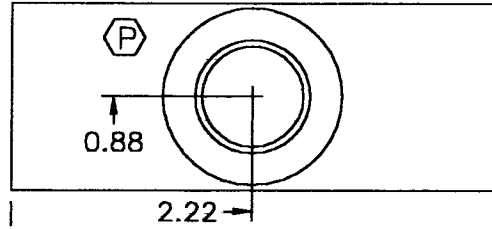


MED-KAS HYDRAULICS, INC.
P.O. BOX 1163 1419 JOHN R
TROY, MI. 48099 TROY, MI. 48083
TEL: 248-585-3220 FAX # 248 585-0646
WEB SITE: www.med-kas.com E-MAIL: info@med-kas.com

D03 SUBPLATE

SEE TECHNICAL INFORMATION SECTION FOR VALVE MOUNTING DIMENSIONS

OVERSIZED SIDE PORTED ONLY SUBPLATE

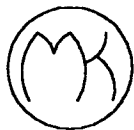


SUBPLATE MOUNTING HOLES TO ACCOMMODATE #10-24 SOCKET HEAD CAP SCREWS

PORT SIZES

SAE THREAD	1.062-12 = 12T
NPTF	.750-14 = 12

PART NO. BY-12-*
 D03 DESIGNATION ———
 PORT SIZE ———
 PORT TYPE
 T—SAE THREAD
 OMIT FOR NPTF

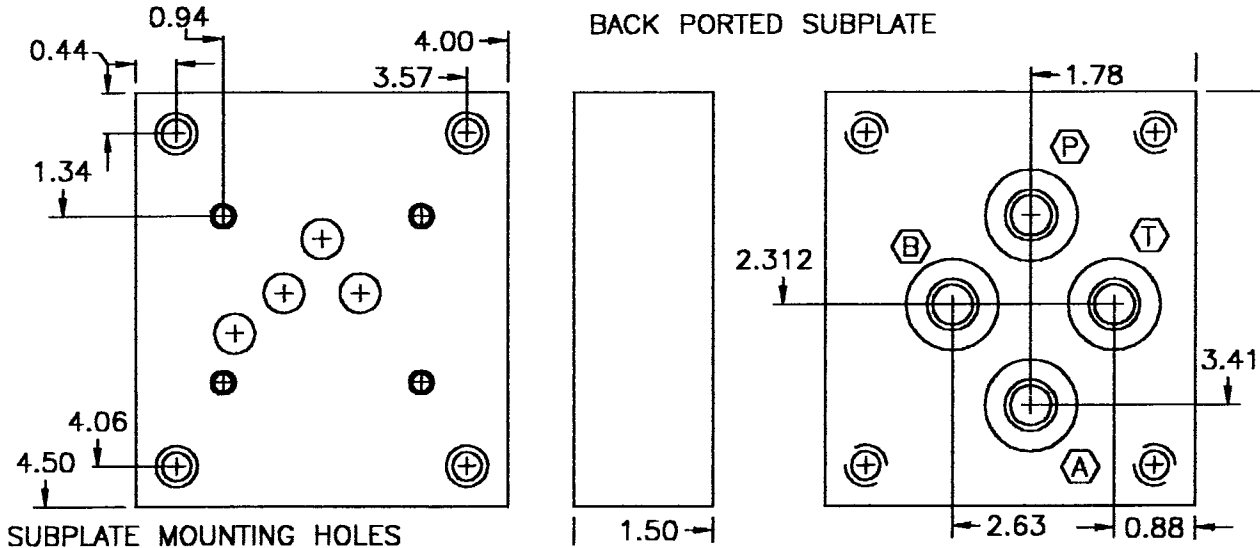


MED-KAS HYDRAULICS, INC.
 P.O. BOX 1163 | 1419 JOHN R
 TROY, MI. 48099 | TROY, MI. 48083
 TEL: 248-585-3220 | FAX # 248 585-0646
 WEB SITE: www.med-kas.com | E-MAIL: info@med-kas.com

D05 SUBPLATES

SEE TECHNICAL INFORMATION SECTION FOR VALVE MOUNTING DIMENSIONS

BACK PORTED SUBPLATE

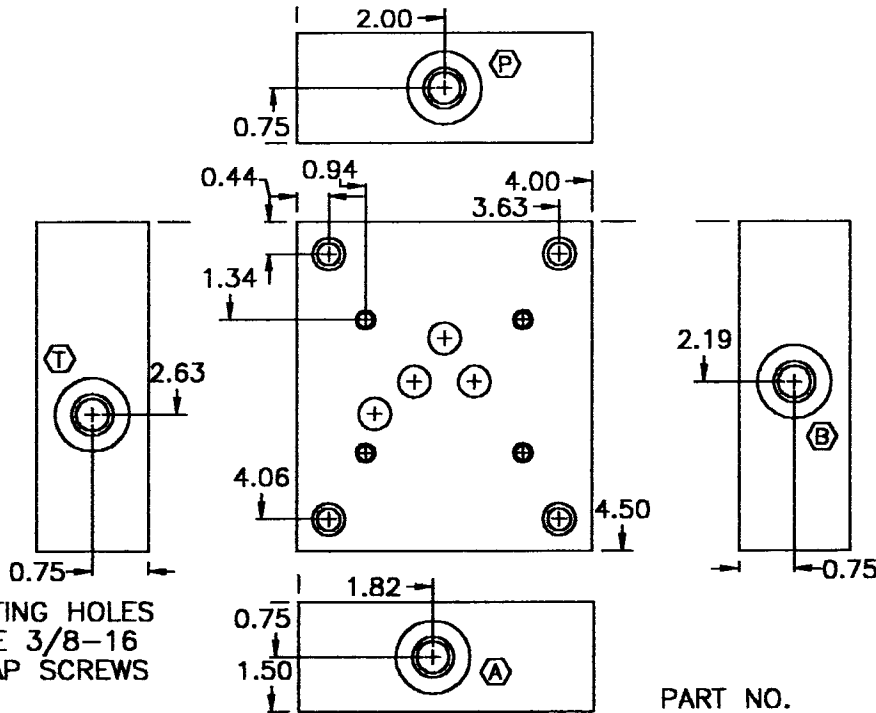


SUBPLATE MOUNTING HOLES
TO ACCOMMODATE 3/8-16
SOCKET HEAD CAP SCREWS

D05 DESIGNATION		
SAE THREAD	.562-18=6T	.750-16=8T
NPTF	.375-18=6	.500-14=8

PART NO. A-6-*B
 BACK PORTED
 (OMIT FOR SIDE PORTED)
 PORT TYPE
 T-SAE THREAD
 P-NPTF

SIDE PORTED SUBPLATE



SUBPLATE MOUNTING HOLES
TO ACCOMMODATE 3/8-16
SOCKET HEAD CAP SCREWS

D05 DESIGNATION		
SAE THREAD	.562-18=6T	.750-16=8T
NPTF	.375-18=6	.500-14=8

PART NO. A-6-*
 PORT TYPE
 T-SAE THREAD
 P-NPTF

SUBPLATE MATERIAL: 1018



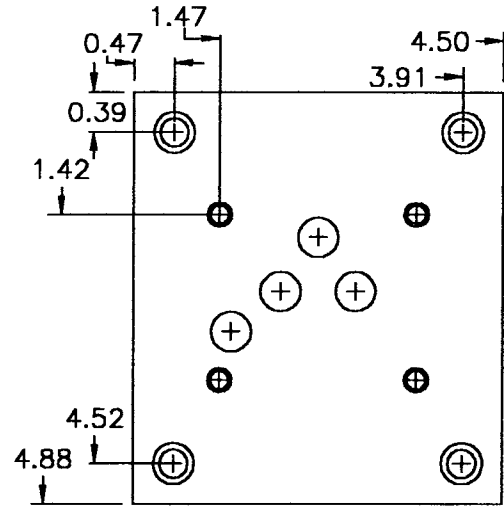
MED-KAS HYDRAULICS, INC.
 P.O. BOX 1163 1419 JOHN R
 TROY, MI. 48099 TROY, MI. 48083
 TEL: 248-585-3220 FAX # 248 585-0646
 WEB SITE: www.med-kas.com E-MAIL: info@med-kas.com

SPECIFICATIONS SUBJECT TO CHANGE WITHOUT NOTICE

D05 SUBPLATES

SEE TECHNICAL INFORMATION SECTION FOR VALVE MOUNTING DIMENSIONS

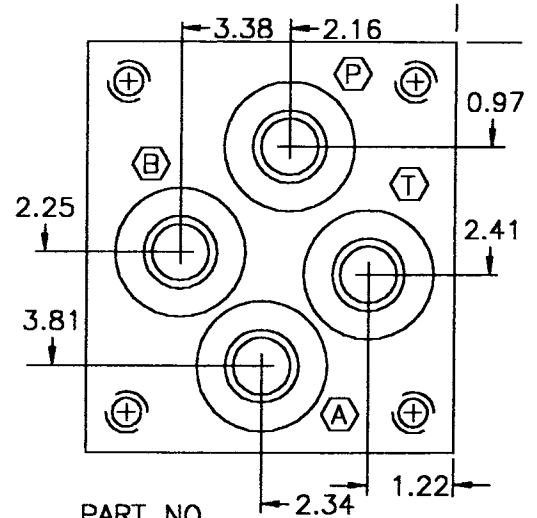
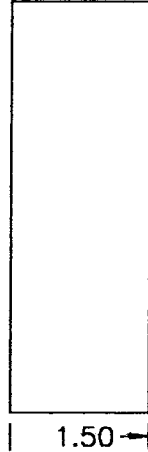
OVERSIZED REAR PORTED SUBPLATE



SUBPLATE MOUNTING HOLES TO ACCOMMODATE 3/8-16 SOCKET HEAD CAP SCREWS

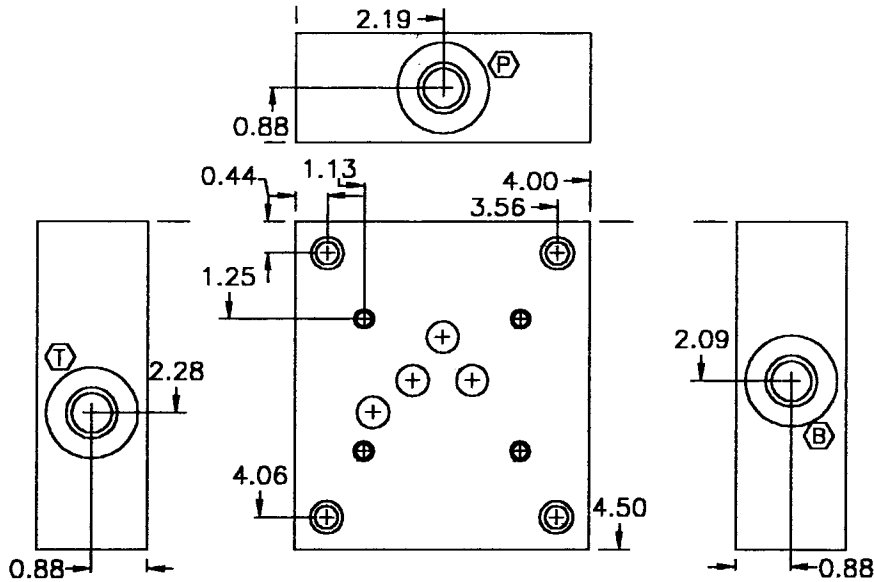
PORT SIZES

SAE THREAD	1.062-12=12T
NPTF	.750-14=12



PART NO. A-12-*
 D05 DESIGNATION A-12-*
 PORT SIZE 12
 BACK PORTED (OMIT FOR SIDE PORTED)
 PORT TYPE *
 T-SAE THREAD
 OMIT FOR NPTF

OVERSIZED SIDE PORTED SUBPLATE



SUBPLATE MOUNTING HOLES TO ACCOMMODATE 3/8-16 SOCKET HEAD CAP SCREWS

PORT SIZES

SAE THREAD	1.062-12=12T
NPTF	0.75-14=12

PART NO. A-12-*
 D05 DESIGNATION A-12-*
 PORT SIZE 12
 PORT TYPE *
 T-SAE THREAD
 OMIT FOR NPTF

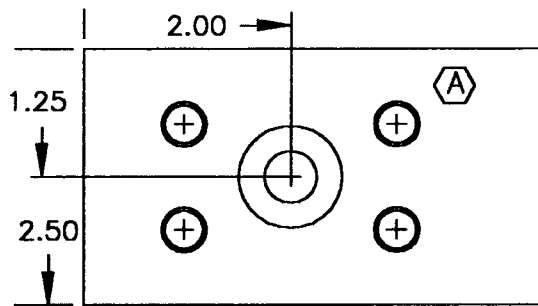
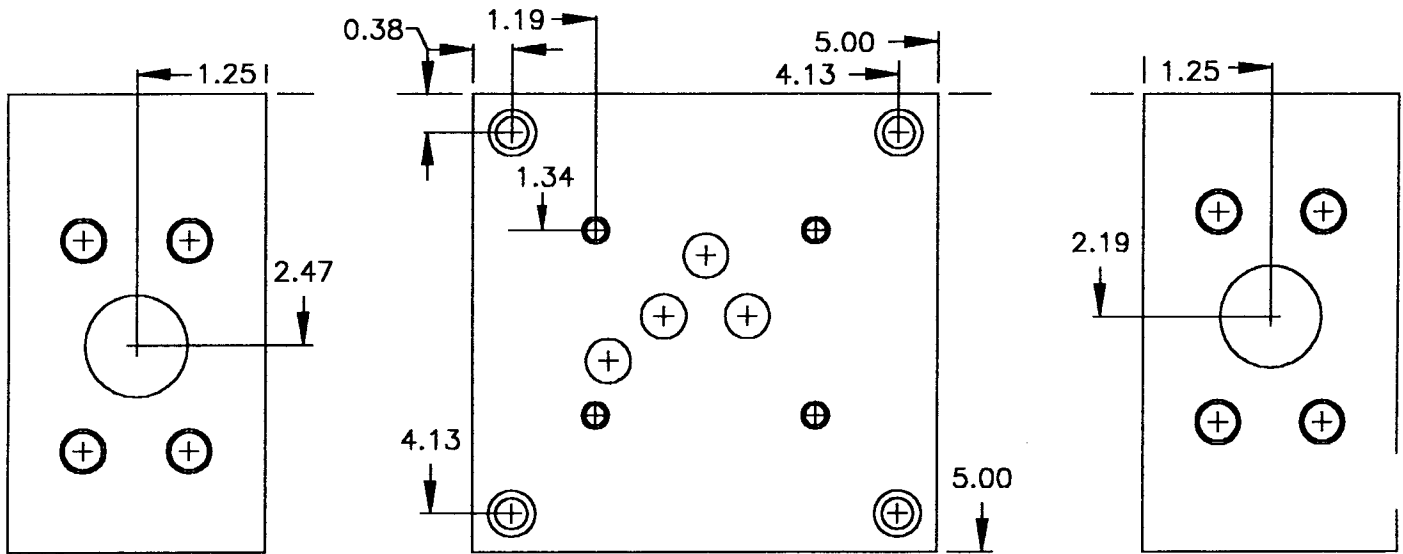
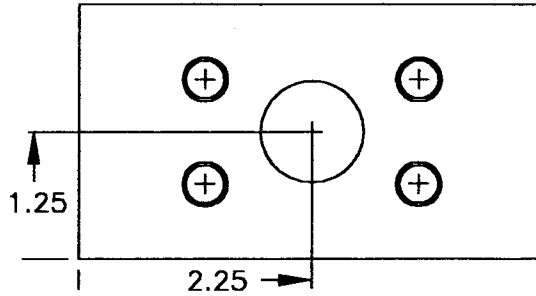


MED-KAS HYDRAULICS, INC.
 P.O. BOX 1163 1419 JOHN R
 TROY, MI. 48099 TROY, MI. 48083
 TEL: 248-585-3220 FAX # 248 585-0646
 WEB SITE: www.med-kas.com E-MAIL: info@med-kas.com

D05 SUBPLATES

SEE TECHNICAL INFORMATION SECTION FOR VALVE MOUNTING DIMENSIONS

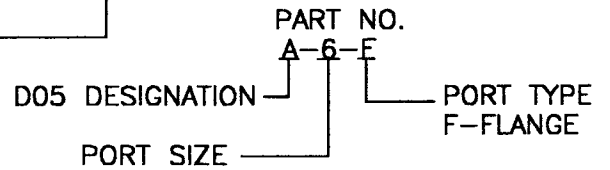
FLANGE CONNECTIONS



SUBPLATE MOUNTING HOLES TO ACCOMMODATE 3/8-16 SOCKET HEAD CAP SCREWS

PORT SIZES

SAE FLANGES .750-3000#

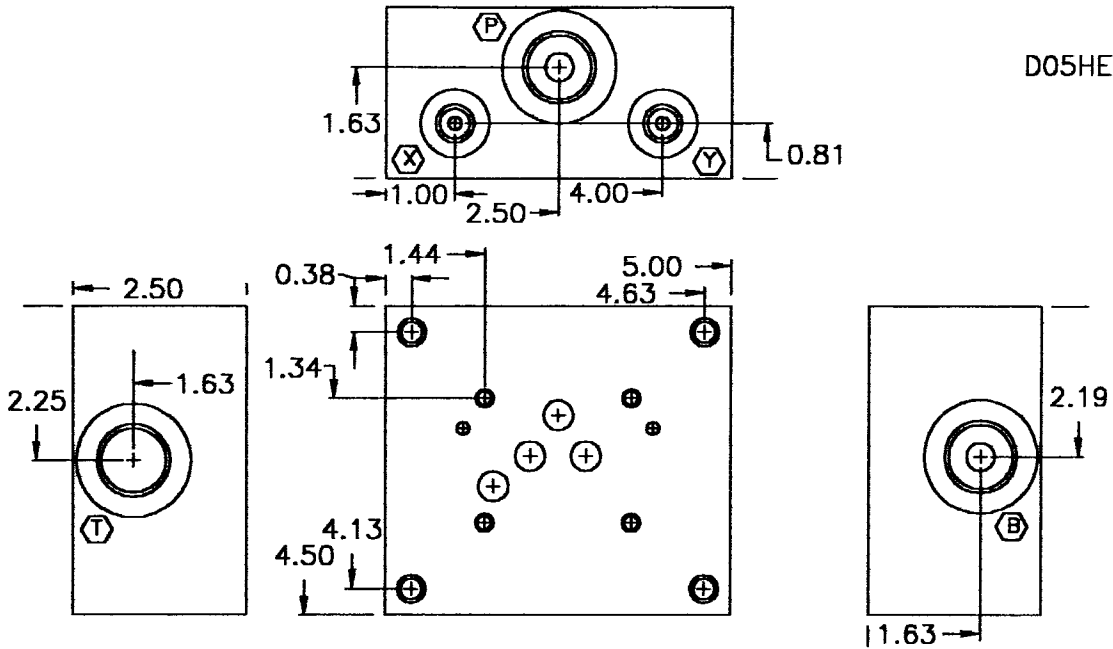


MED-KAS HYDRAULICS, INC.
 P.O. BOX 1163 TROY, MI. 48099
 TEL: 248-585-3220
 WEB SITE: www.med-kas.com
 1419 JOHN R TROY, MI. 48083
 FAX # 248 585-0646
 E-MAIL: info@med-kas.com

D05H SUBPLATES

SEE TECHNICAL INFORMATION SECTION FOR VALVE MOUNTING DIMENSIONS

SIDE PORTED SUBPLATE

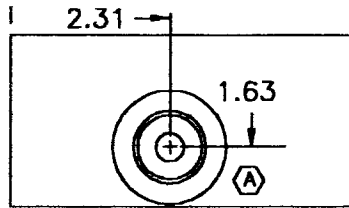


D05HE

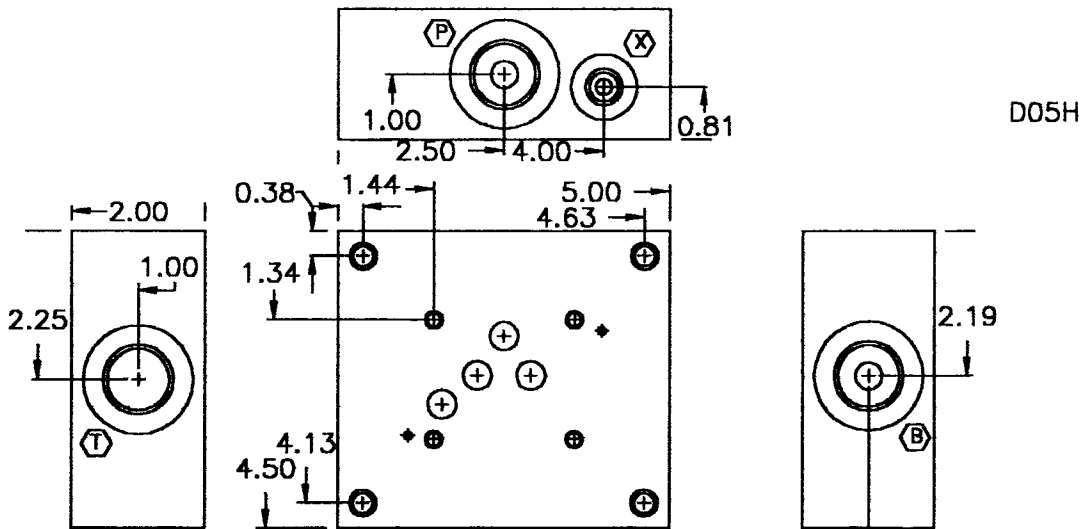
SUBPLATE MOUNTING HOLES TO ACCOMMODATE 3/8-16 SOCKET HEAD CAP SCREWS

PORT SIZES

P,T,A,B	1.062-12=12T
X+Y	.562-18=6T



PART NO. CC-12-T
D05H DESIGNATION
PORT SIZE
PORT TYPE T-SAE THREAD

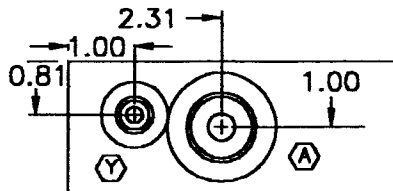


D05H

SUBPLATE MOUNTING HOLES TO ACCOMMODATE 3/8-16 SOCKET HEAD CAP SCREWS

PORT SIZES

P,T,A,B	1.062-12=12T
X+Y	.562-18=6T



PART NO. KC-12-T
D05H DESIGNATION
PORT SIZE
PORT TYPE T-SAE THREAD



MED-KAS HYDRAULICS, INC.

P.O. BOX 1163 1419 JOHN R
TROY, MI. 48099 TROY, MI. 48083

TEL: 248-585-3220 FAX # 248 585-0646

E-MAIL: info@med-kas.com

SUBPLATE MATERIAL: 1018

WEB SITE: www.med-kas.com

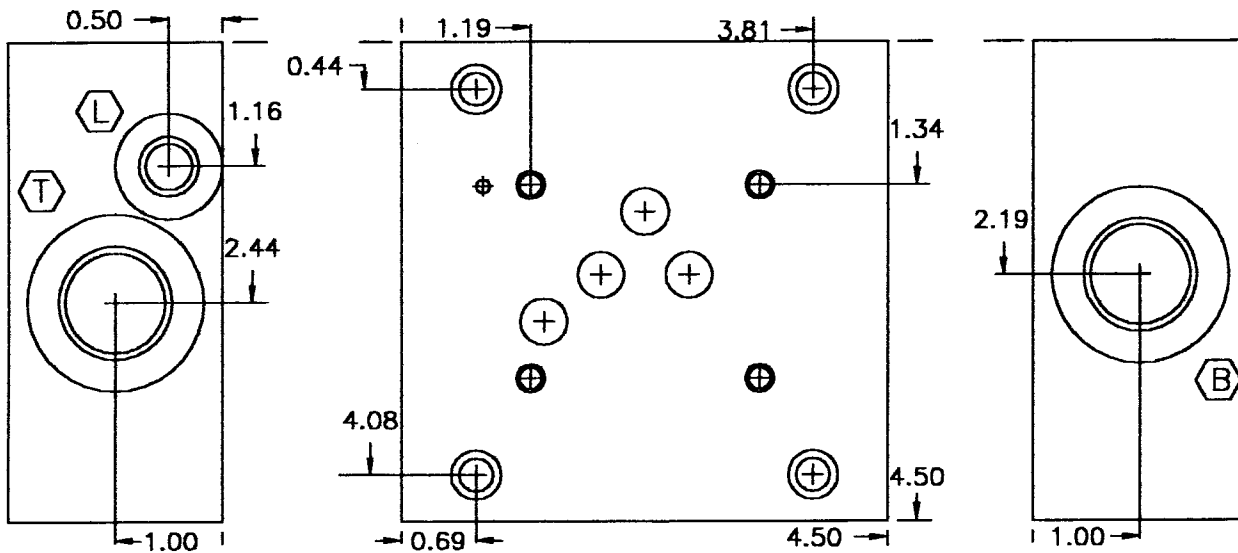
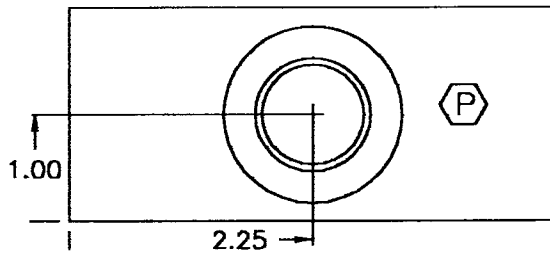
SPECIFICATIONS SUBJECT TO CHANGE WITHOUT NOTICE

D05H SUBPLATES

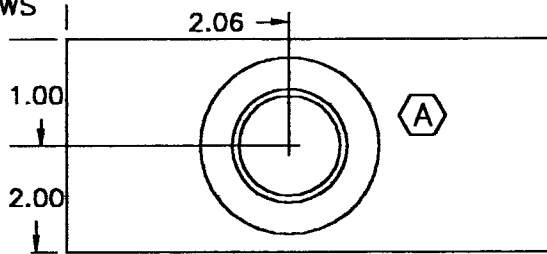
SEE TECHNICAL INFORMATION SECTION FOR VALVE MOUNTING DIMENSIONS

SIDE PORTED SUBPLATE

D05-"L" DRAIN
(VICKERS AND BOSCH)



SUBPLATE MOUNTING HOLES TO
ACCOMMODATE 3/8-16
SOCKET HEAD CAP SCREWS



PORT SIZES

P,T,A,B	1.062-12=12T
"L"	.562-18=6T

D05H DESIGNATION PART NO.
JE-12-T
 PORT SIZE PORT TYPE
T-SAE THREAD

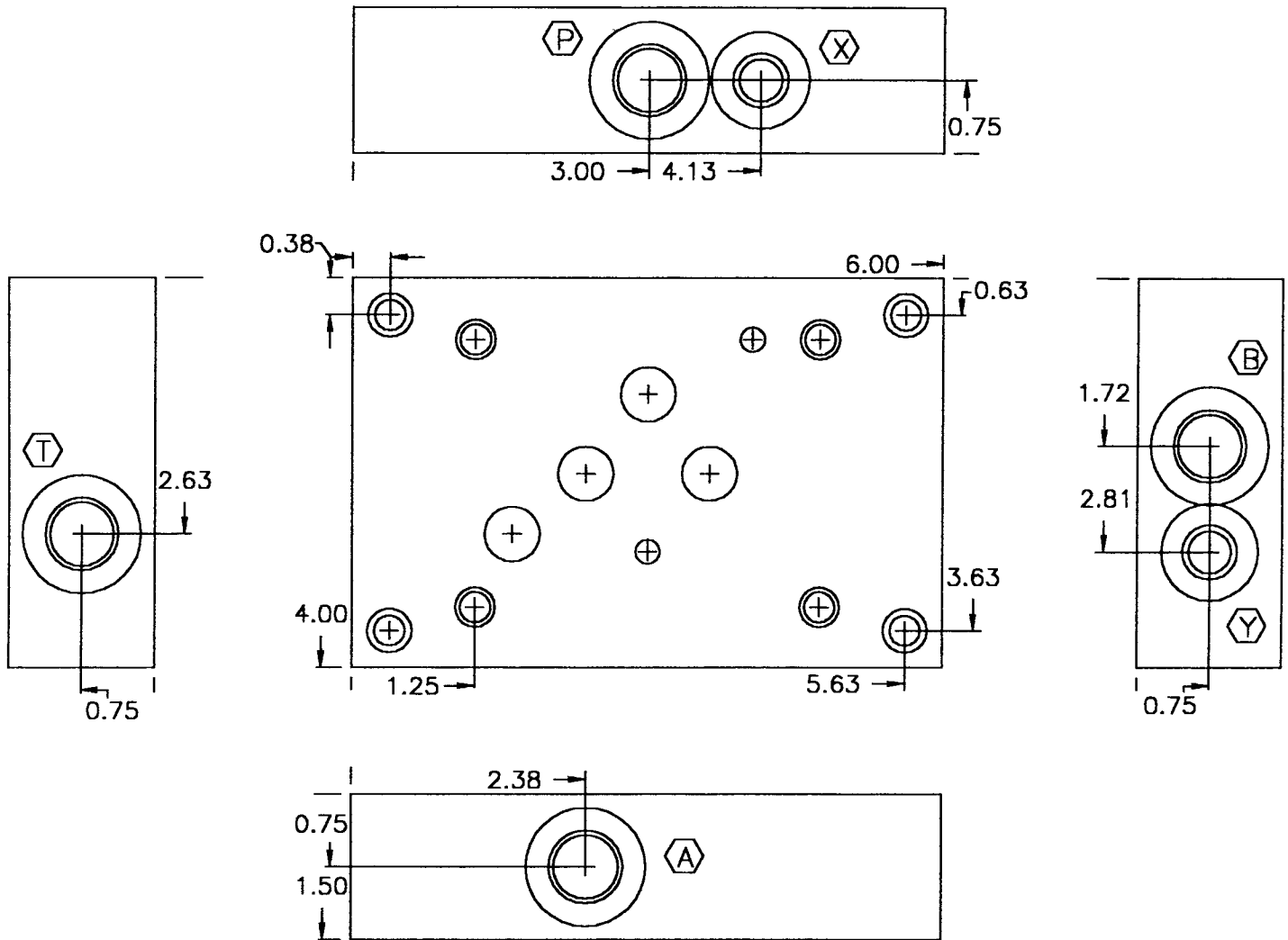


MED-KAS HYDRAULICS, INC.
 P.O. BOX 1163 1419 JOHN R SUBPLATE MATERIAL: 1018
 TROY, MI. 48099 TROY, MI. 48083
 TEL: 248-585-3220 FAX # 248 585-0646
 WEB SITE: www.med-kas.com E-MAIL: info@med-kas.com

D06 SUBPLATES

SEE TECHNICAL INFORMATION SECTION FOR VALVE MOUNTING DIMENSIONS

SIDE PORTED SUBPLATE



SUBPLATE MOUNTING HOLES TO ACCOMMODATE 3/8-16 SOCKET HEAD CAP SCREWS

PORT SIZES

SAE THREAD	.750-16=8T
NPTF	.500-14=8

X&Y PORTS	
SAE THREAD	.562-18
NPTF	.250-14

PART NO. B-8-*
 D06 DESIGNATION — B
 PORT SIZE — 8
 PORT SIZE T—SAE THREAD
 OMIT FOR NPTF



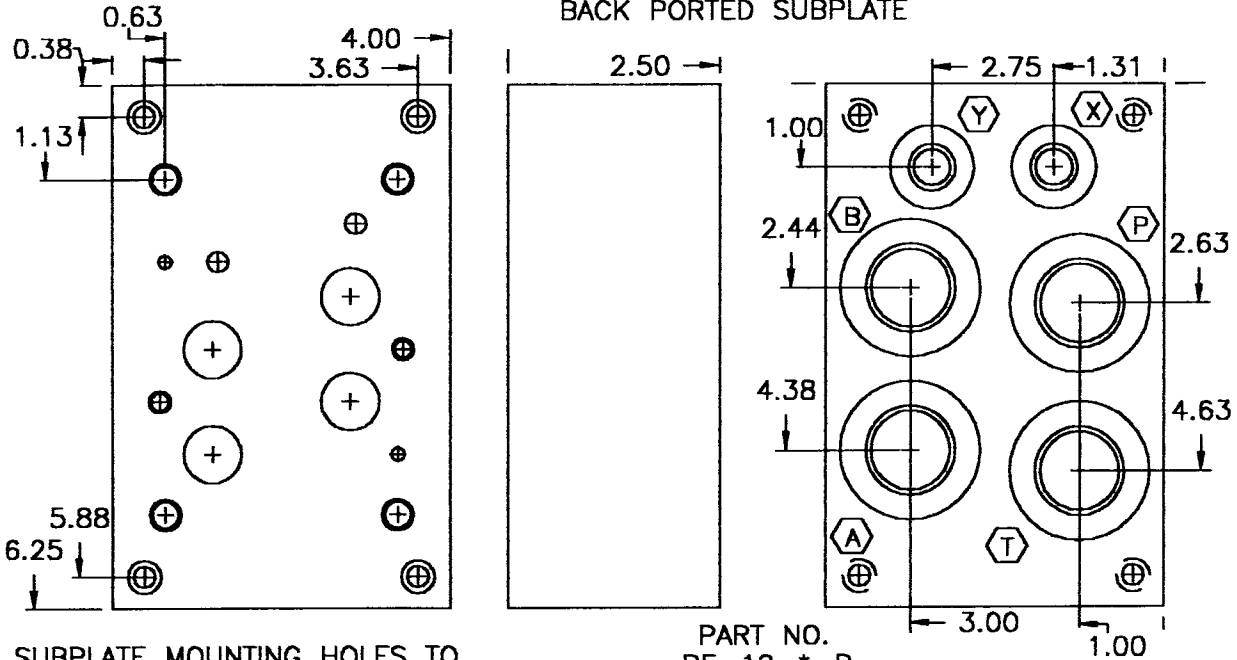
MED-KAS HYDRAULICS, INC.
 P.O. BOX 1163 1419 JOHN R
 TROY, MI. 48099 TROY, MI. 48083
 TEL: 248-585-3220 FAX # 248 585-0646
 WEB SITE: www.med-kas.com E-MAIL: info@med-kas.com

SUBPLATE MATERIAL: 1018

SPECIFICATIONS SUBJECT TO CHANGE WITHOUT NOTICE

D07 SUBPLATES

SEE TECHNICAL INFORMATION SECTION FOR VALVE MOUNTING DIMENSIONS
BACK PORTED SUBPLATE



SUBPLATE MOUNTING HOLES TO ACCOMMODATE 5/16-18 SOCKET HEAD CAP SCREWS D07 DESIGNATION

PORT SIZES

SAE THREAD	1.062-12=12T
NPTF	.750-14=12

X+Y PORTS	SAE THREAD .562-18
	NPTF .250-18

PART NO.
BE-12-* -B

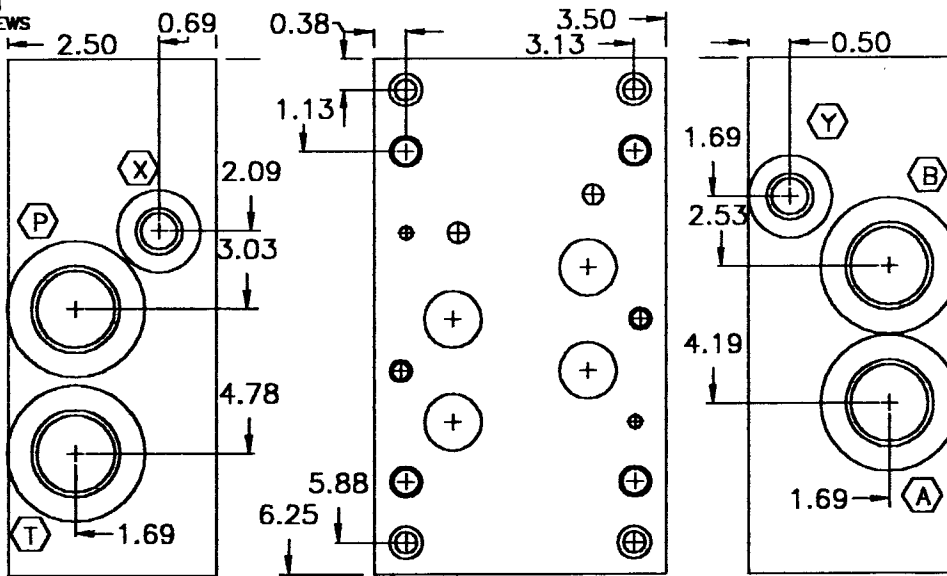
BACK PORTED (OMIT FOR SIDE PORTED)

PORT SIZE

PORT TYPE
T-SAE THREAD
OMIT FOR NPTF

SUBPLATE MOUNTING HOLES TO ACCOMMODATE 5/16-18 SOCKET HEAD CAP SCREWS

SIDE PORTED SUBPLATE



PORT SIZES

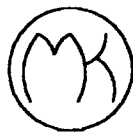
SAE THREAD	1.062-12=12T
NPTF	.750-14=12

X+Y PORTS	SAE THREAD .562-18
	NPTF .250-18

PART NO.
BE-12-*
D07 DESIGNATION

PORT SIZE

PORT TYPE
T-SAE THREAD
OMIT FOR NPTF



MED-KAS HYDRAULICS, INC.

P.O. BOX 1163
TROY, MI. 48099

1419 JOHN R
TROY, MI. 48083

TEL: 248-585-3220

FAX # 248 585-0646

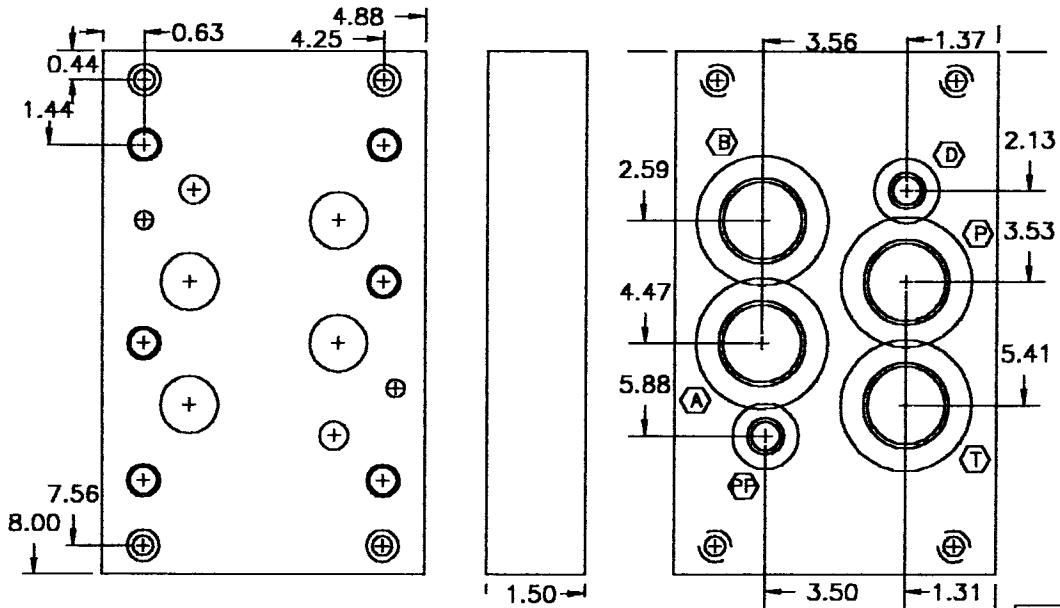
WEB SITE: www.med-kas.com

E-MAIL: info@med-kas.com

D08 SUBPLATES

SEE TECHNICAL INFORMATION SECTION FOR VALVE MOUNTING DIMENSIONS

BACK PORTED SUBPLATE



SUBPLATE MOUNTING HOLES TO ACCOMMODATE 3/8-16 SOCKET HEAD CAP SCREWS D08 DESIGNATION

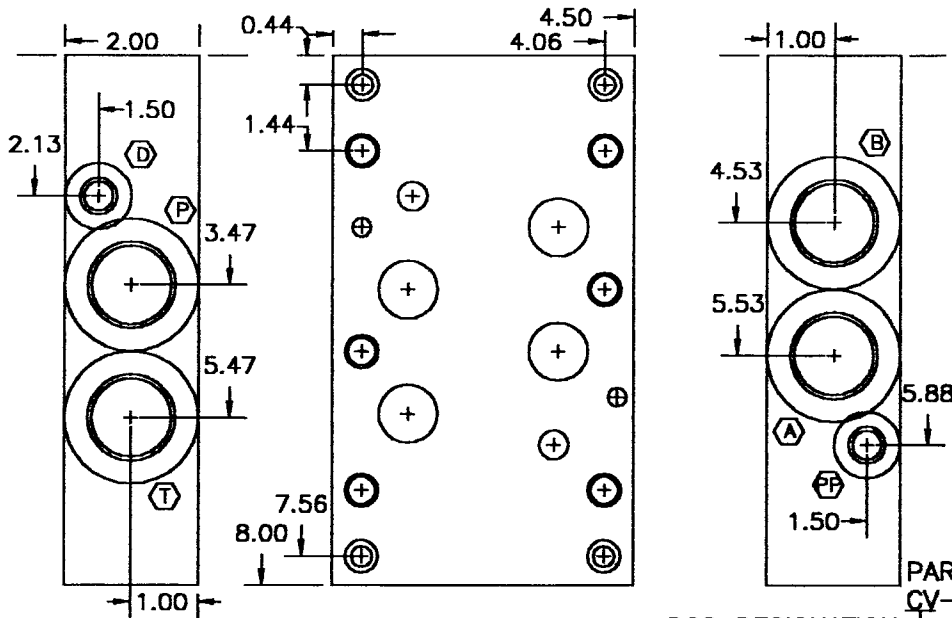
SAE THREAD	1.062-12=12T	1.312-12=16T
NPTF	.750-14=12	1.000-11.5=16

PART NO.
CV-16-*B

BACK PORTED
(OMIT FOR SIDE PORTED)
PORT TYPE
T-SAE THREAD
OMIT FOR NPTF

X&Y PORTS
SAE THREAD .562-18
NPTF .250-14

SIDE PORTED SUBPLATE



D08 DESIGNATION

SAE THREAD	1.062-12=12T	1.312-12=16T
NPTF	.750-14=12	1.000-11.5=16

PART NO.
CV-16-*

PORT TYPE
T-SAE THREAD
OMIT FOR NPTF

X&Y PORTS
SAE THREAD .562-18
NPTF .250-14



MED-KAS HYDRAULICS, INC.
P.O. BOX 1163 1419 JOHN R
TROY, MI. 48099 TROY, MI. 48083
TEL: 248-585-3220 FAX # 248 585-0646
WEB SITE: www.med-kas.com E-MAIL: info@med-kas.com

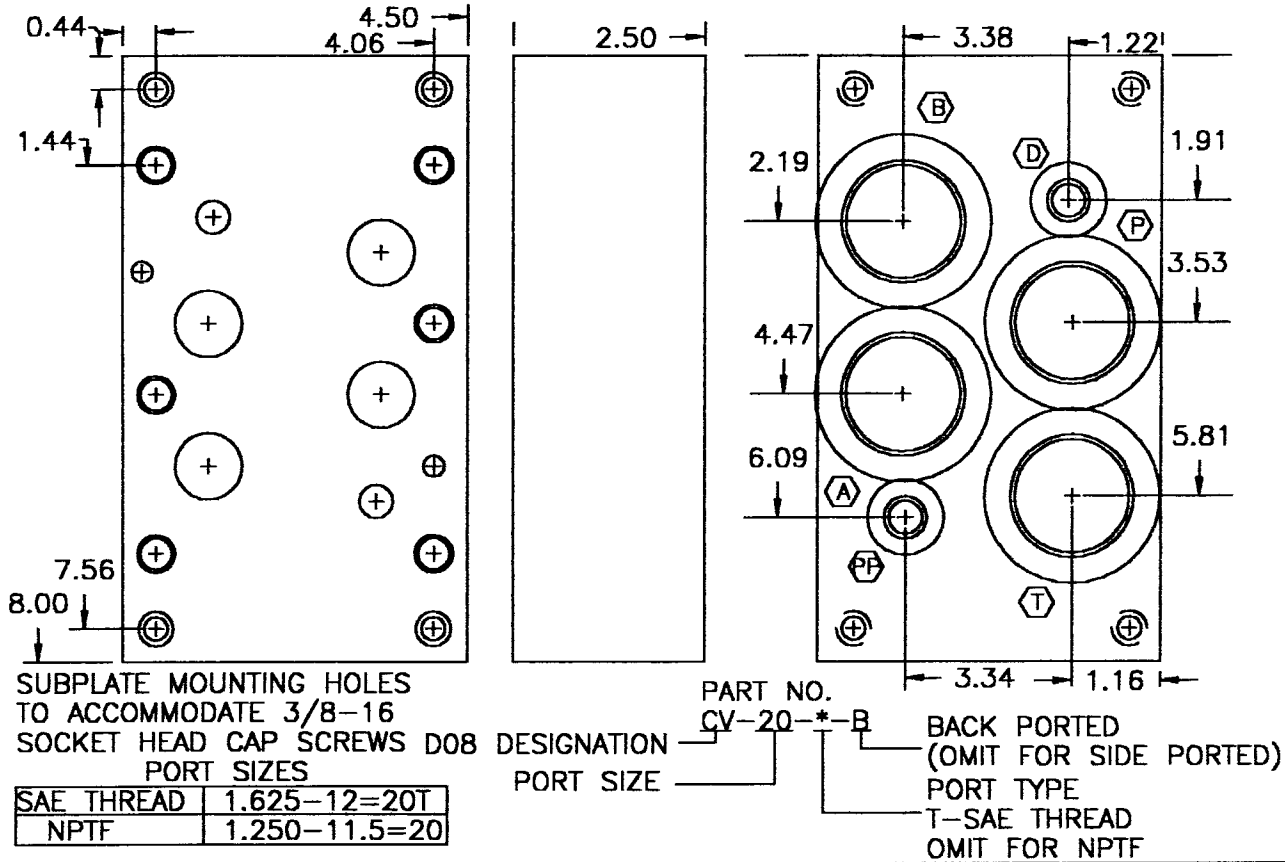
SUBPLATE MOUNTING HOLES TO ACCOMMODATE 3/8-16 SOCKET HEAD CAP SCREWS

SPECIFICATIONS SUBJECT TO CHANGE WITHOUT NOTICE

D08 SUBPLATE

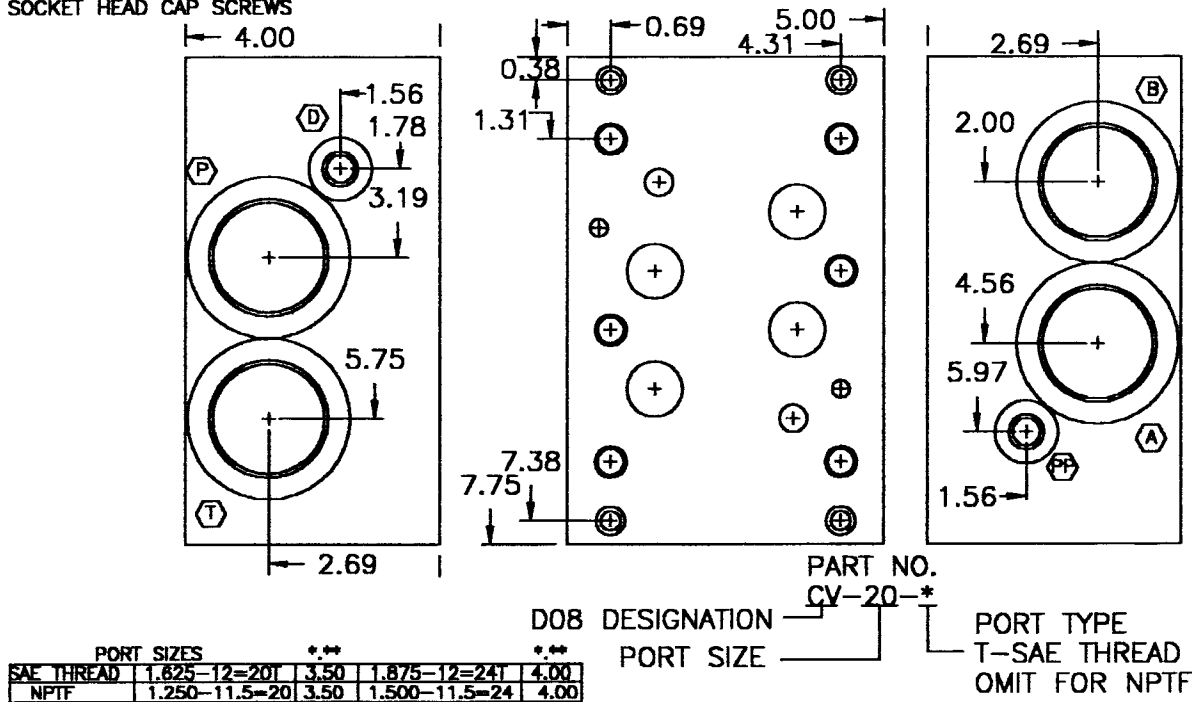
SEE TECHNICAL INFORMATION SECTION FOR VALVE MOUNTING DIMENSIONS

OVERSIZED REAR PORTED SUBPLATE



SUBPLATE MOUNTING HOLES TO ACCOMMODATE 3/8-16 SOCKET HEAD CAP SCREWS

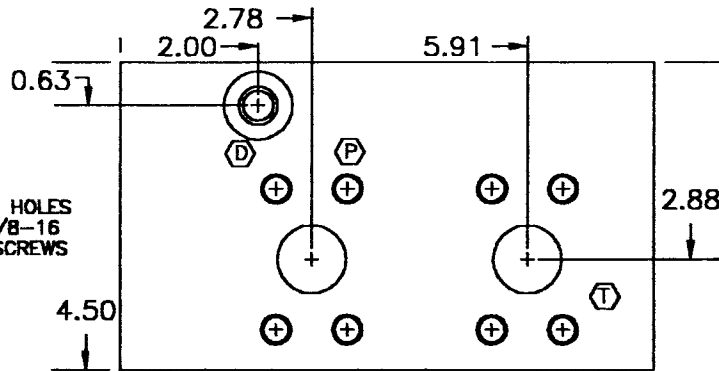
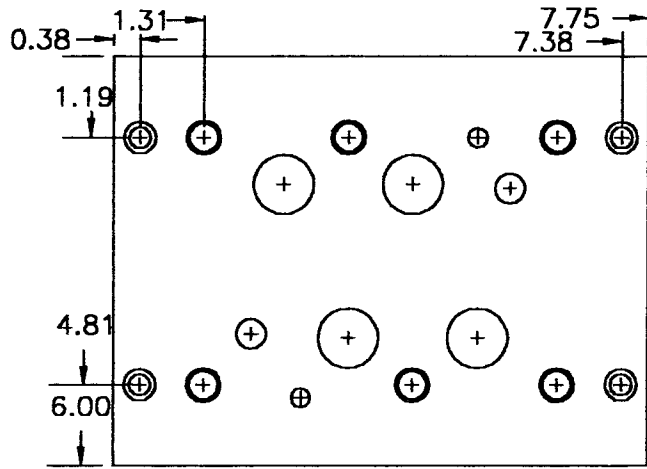
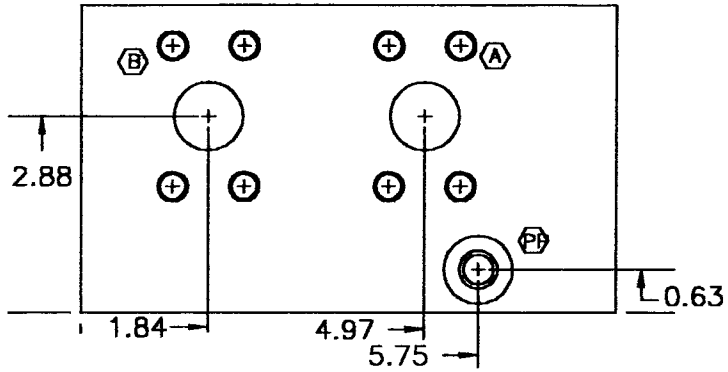
OVERSIZED SIDE PORTED SUBPLATE



MED-KAS HYDRAULICS, INC.
 P.O. BOX 1163 1419 JOHN R
 TROY, MI. 48099 TROY, MI. 48083
 TEL: 248-585-3220 FAX # 248 585-0646
 WEB SITE: www.med-kas.com E-MAIL: info@med-kas.com

D08 SUBPLATES

SEE TECHNICAL INFORMATION SECTION FOR VALVE MOUNTING DIMENSIONS
FLANGE CONNECTIONS



SUBPLATE MOUNTING HOLES
TO ACCOMMODATE 3/8-16
SOCKET HEAD CAP SCREWS

PART NO. CV-10-E
D08 DESIGNATION PORT SIZE PORT TYPE=FLANGE

PORT SIZES	
SAE FLANGES	1.250-3000#
PP+D	.562-18=6T



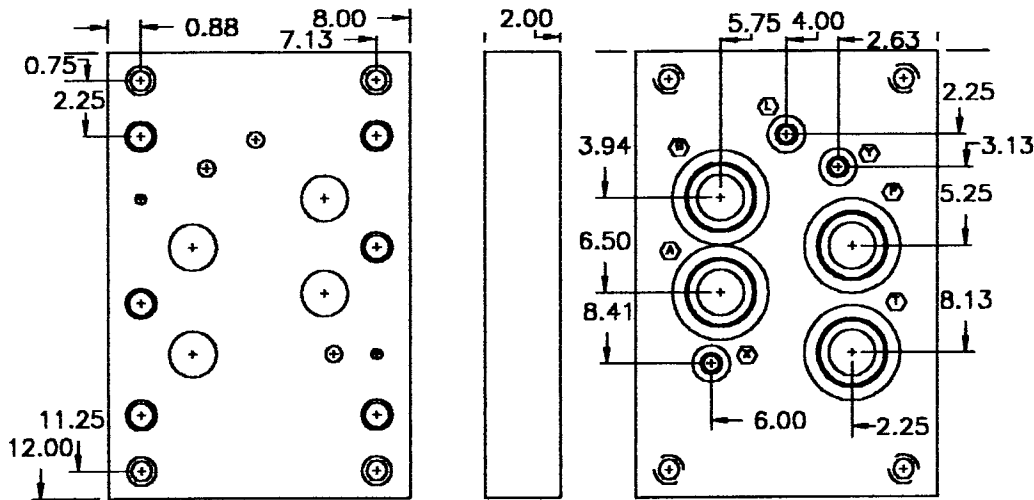
MED-KAS HYDRAULICS, INC.
P.O. BOX 1163 1419 JOHN R
TROY, MI. 48099 TROY, MI. 48083
TEL: 248-585-3220 FAX # 248 585-0646
WEB SITE: www.med-kas.com E-MAIL: info@med-kas.com

SUBPLATE MATERIAL: 1018

SPECIFICATIONS SUBJECT TO CHANGE WITHOUT NOTICE

D10 SUBPLATES

SEE TECHNICAL INFORMATION SECTION FOR VALVE MOUNTING DIMENSIONS
BACK PORTED SUBPLATE



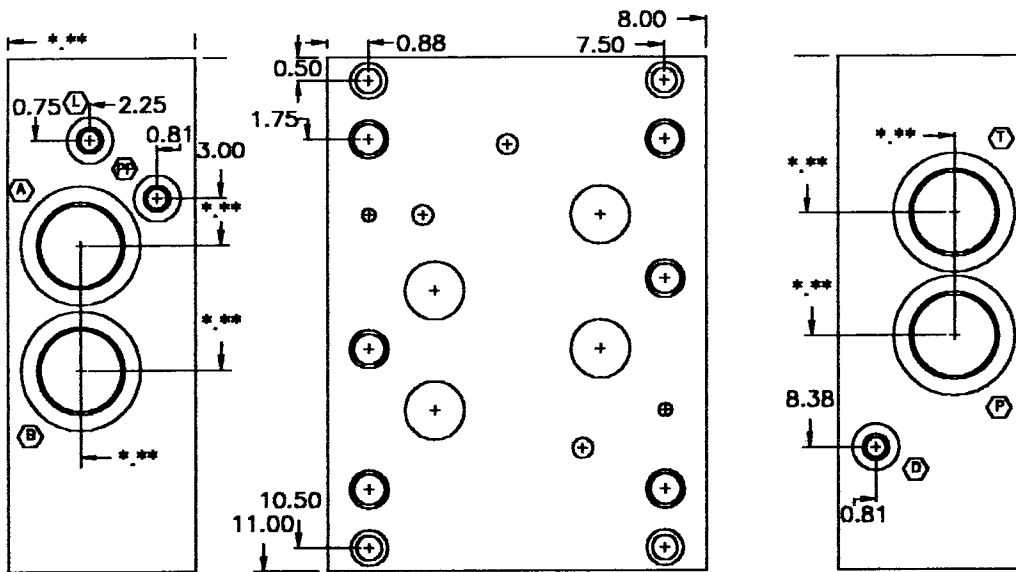
SUBPLATE MOUNTING HOLES
TO ACCOMMODATE 5/8-11
SOCKET HEAD CAP SCREWS

PORT SIZES	
SAE THREAD	1.875-12=24T
NPTF	1.500-11.5=24

X,Y,&L PORTS	
SAE THREAD	.750-16
NPTF	.375-18

D10 DESIGNATION $D-24-\frac{*}{*}-B$ PART NO. $D-24-\frac{*}{*}-B$
 PORT SIZE BACK PORTED (OMIT FOR SIDE PORTED)
 PORT TYPE T-SAE THREAD
 OMIT FOR NPTF

SIDE PORTED SUBPLATE



SUBPLATE MOUNTING HOLES
TO ACCOMMODATE 5/8-11
SOCKET HEAD CAP SCREWS

X,Y,&L PORTS	
SAE THREAD	.750-16
NPTF	.375-18

D10 DESIGNATION $D-24-\frac{*}{*}-L$ PART NO. $D-24-\frac{*}{*}-L$
 PORT SIZE PORT TYPE
 T-SAE THREAD
 OMIT FOR NPTF

** DIMENSIONS CHANGE
WITH PORT SIZE

PORT SIZES		**	**	**	**	**
SAE THREAD	1.625-12=20T	3.50	1.875-12=24T	4.00	2.50-12=32T	4.50
NPTF	1.250-11.5=20	3.50	1.500-11.5=24	4.00	2.00-11.5=32	4.00



MED-KAS HYDRAULICS, INC.

P.O. BOX 1163

1419 JOHN R

TROY, MI. 48099

TROY, MI. 48083

TEL: 248-585-3220

FAX # 248 585-0646

WEB SITE: www.med-kas.com

E-MAIL: info@med-kas.com

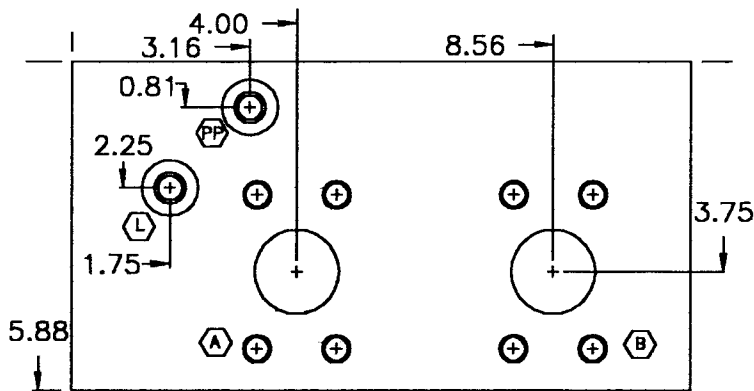
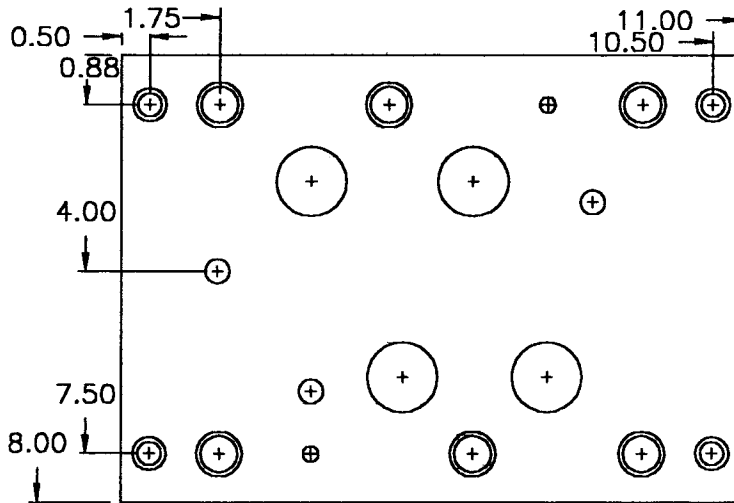
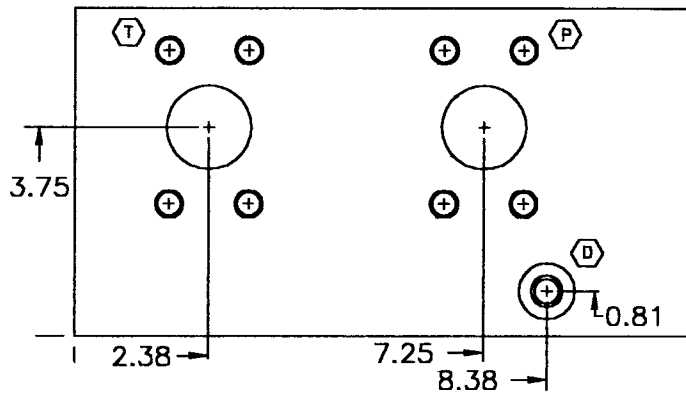
SUBPLATE MATERIAL: 1018

4-14

SPECIFICATIONS SUBJECT TO CHANGE WITHOUT NOTICE

D10 SUBPLATES

SEE TECHNICAL INFORMATION SECTION FOR VALVE MOUNTING DIMENSIONS
FLANGE CONNECTIONS

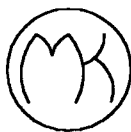


SUBPLATE MOUNTING HOLES
TO ACCOMMODATE 1/2-13
SOCKET HEAD CAP SCREWS

PORT SIZES

SAE FLANGES	2.00-3000#
PP, D+l	.562-18=6T

PART NO.
D-16-E
D10 DESIGNATION ————
PORT SIZE ———— PORT TYPE=FLANGE



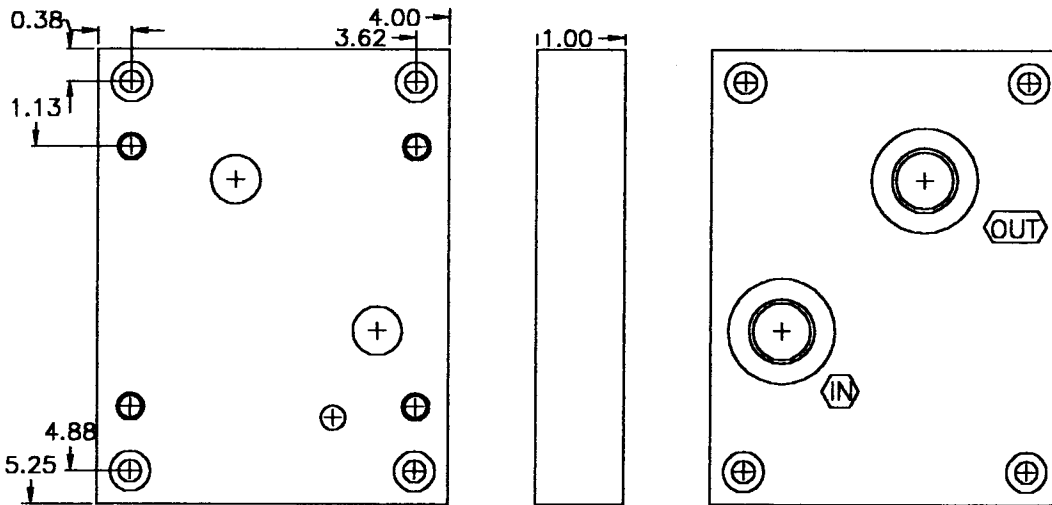
MED-KAS HYDRAULICS, INC.
P.O. BOX 1163 1419 JOHN R
TROY, MI. 48099 TROY, MI. 48083
TEL: 248-585-3220 FAX # 248 585-0646
WEB SITE: www.med-kas.com E-MAIL: info@med-kas.com

SPECIFICATIONS SUBJECT TO CHANGE WITHOUT NOTICE

2F06 SUBPLATES

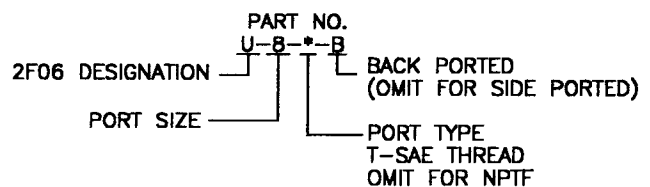
SEE TECHNICAL INFORMATION SECTION FOR VALVE MOUNTING DIMENSIONS

BACK PORTED SUBPLATE

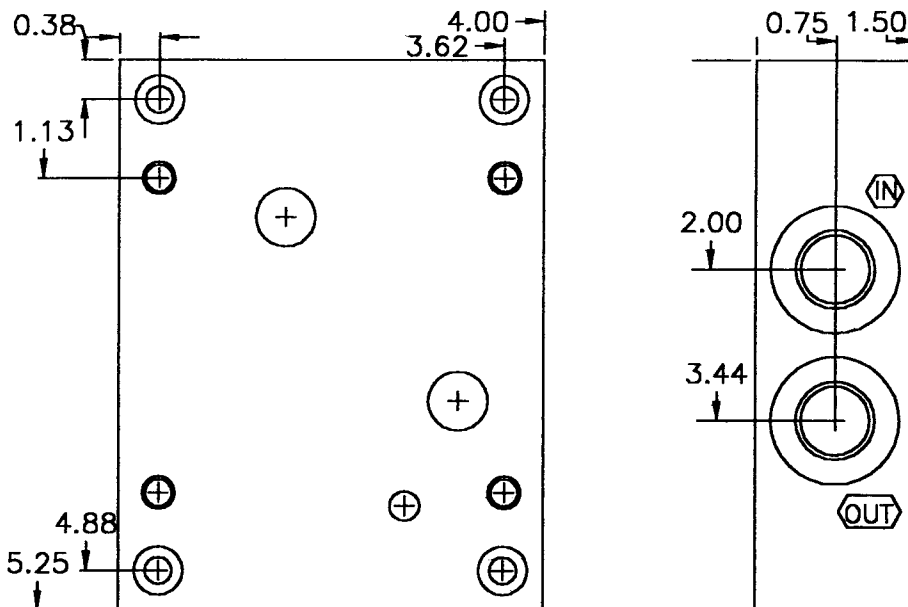


SUBPLATE MOUNTING HOLES
TO ACCOMMODATE 5/16-18
SOCKET HEAD CAP SCREWS

PORT SIZES		
SAE THREAD	.562-18=6T	.750-16=8T
NPTF	.375-18=6	.500-14=8

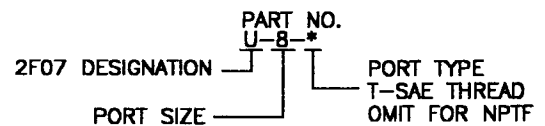


SIDE PORTED SUBPLATE



SUBPLATE MOUNTING HOLES
TO ACCOMMODATE 5/16-18
SOCKET HEAD CAP SCREWS

PORT SIZES		
SAE THREAD	.562-18=6T	.750-16=8T
NPTF	.375-18=6	.500-14=8



MED-KAS HYDRAULICS, INC.

P.O. BOX 1163

1419 JOHN R

TROY, MI. 48099

TROY, MI. 48083

TEL: 248-585-3220

FAX # 248 585-0646

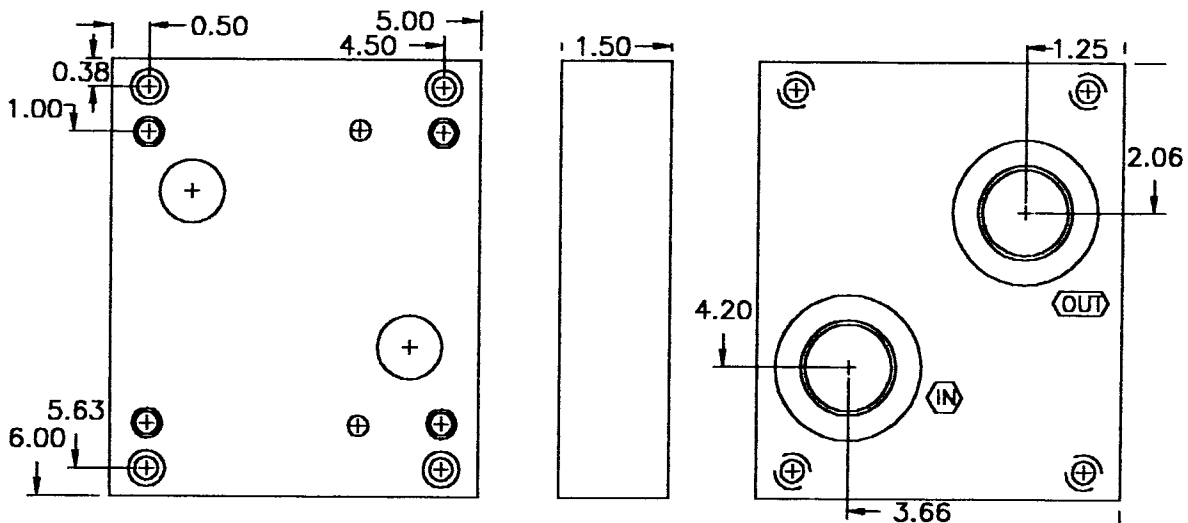
WEB SITE: www.med-kas.com

E-MAIL: info@med-kas.com

2F07 SUBPLATES

SEE TECHNICAL INFORMATION SECTION FOR VALVE MOUNTING DIMENSIONS

BACK PORTED SUBPLATE



SUBPLATE MOUNTING HOLES
TO ACCOMMODATE 3/8-16
SOCKET HEAD CAP SCREWS

PORT SIZES		
SAE THREAD	1.062-12=12T	1.312-12=16T
NPTF	.750-14=12	1.000-11.5=16

2F07 DESIGNATION

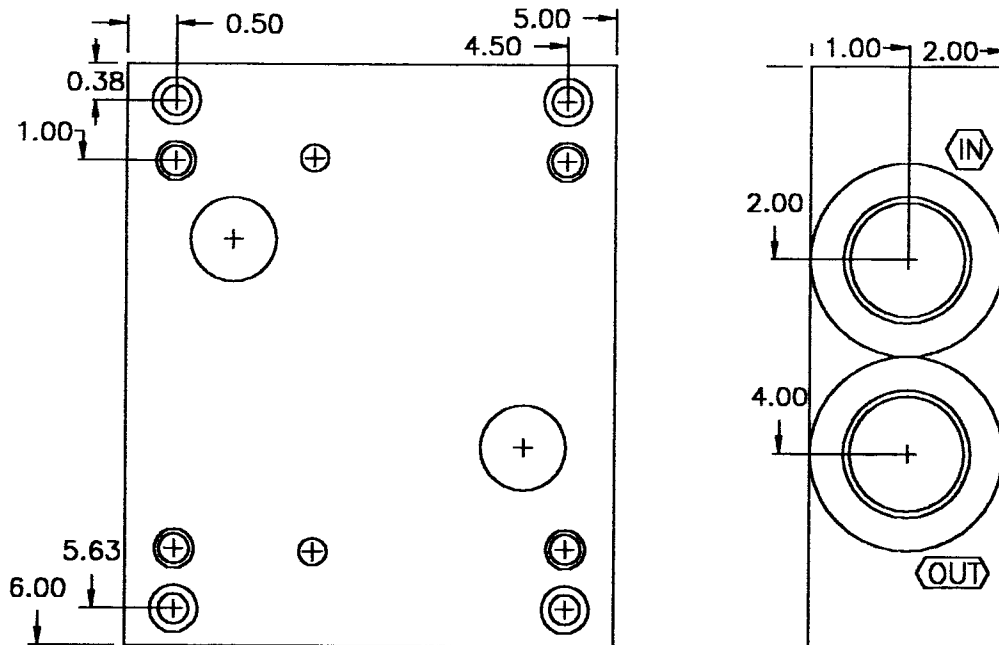
PORT NO.
X-16-*B

PORT SIZE

BACK PORTED
(OMIT FOR SIDE PORTED)

PORT TYPE
T-SAE THREAD
OMIT FOR NPTF

SIDE PORTED SUBPLATE



SUBPLATE MOUNTING HOLES
TO ACCOMMODATE 3/8-16
SOCKET HEAD CAP SCREWS

PORT SIZES		
SAE THREAD	1.062-12=12T	1.312-12=16T
NPTF	.750-14=12	1.000-11.5=16

2F07 DESIGNATION

PORT NO.
X-16-*

PORT SIZE

PORT TYPE
T-SAE THREAD
OMIT FOR NPTF

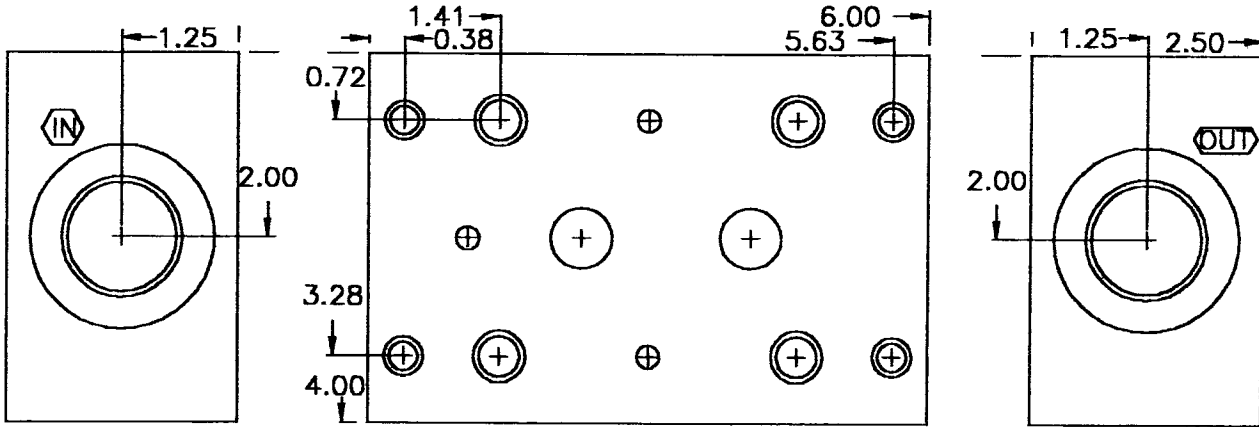


MED-KAS HYDRAULICS, INC.
P.O. BOX 1163 1419 JOHN R
TROY, MI. 48099 TROY, MI. 48083
TEL: 248-585-3220 FAX # 248 585-0646
WEB SITE: www.med-kas.com E-MAIL: info@med-kas.com

SPECIFICATIONS SUBJECT TO CHANGE WITHOUT NOTICE

C08 SUBPLATE

SEE TECHNICAL INFORMATION SECTION FOR VALVE MOUNTING DIMENSIONS



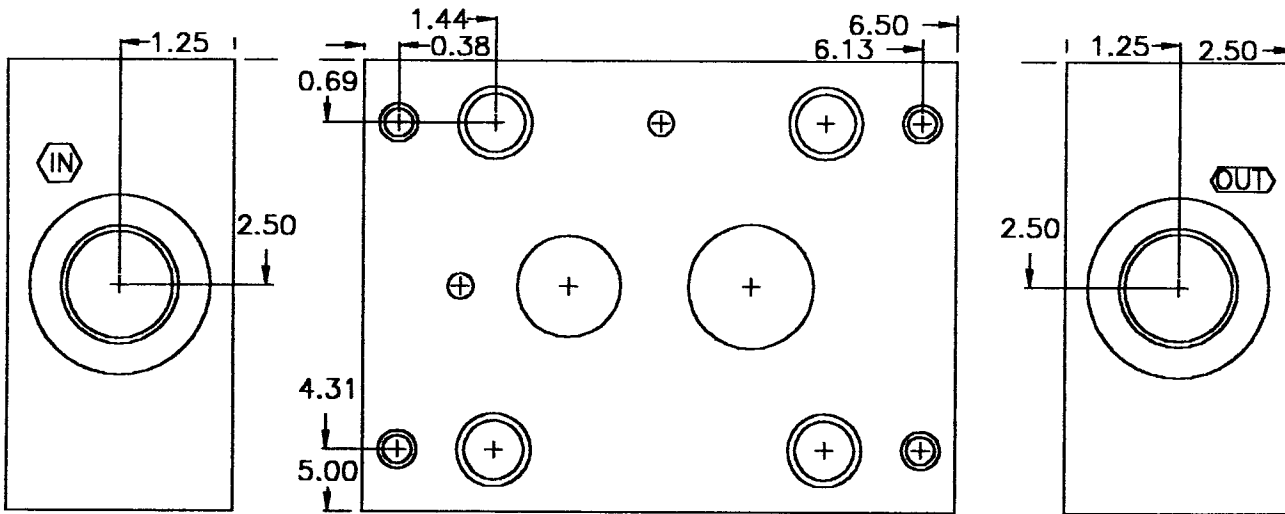
SUBPLATE MOUNTING HOLES
TO ACCOMMODATE 3/8-16
SOCKET HEAD CAP SCREWS

PORT SIZES	
SAE THREAD	1.312-12=16T
NPTF	1.00-11.5=16

PART NO.
E-16-*

C08 DESIGNATION ——— PART TYPE
PORT SIZE ——— T-SAE THREAD
OMIT FOR NPTF

C09 SUBPLATE



SUBPLATE MOUNTING HOLES
TO ACCOMMODATE 3/8-16
SOCKET HEAD CAP SCREWS

PORT SIZES	
SAE THREAD	1.625-12=20T
NPTF	1.250-11.5=20

PART NO.
F-20-*

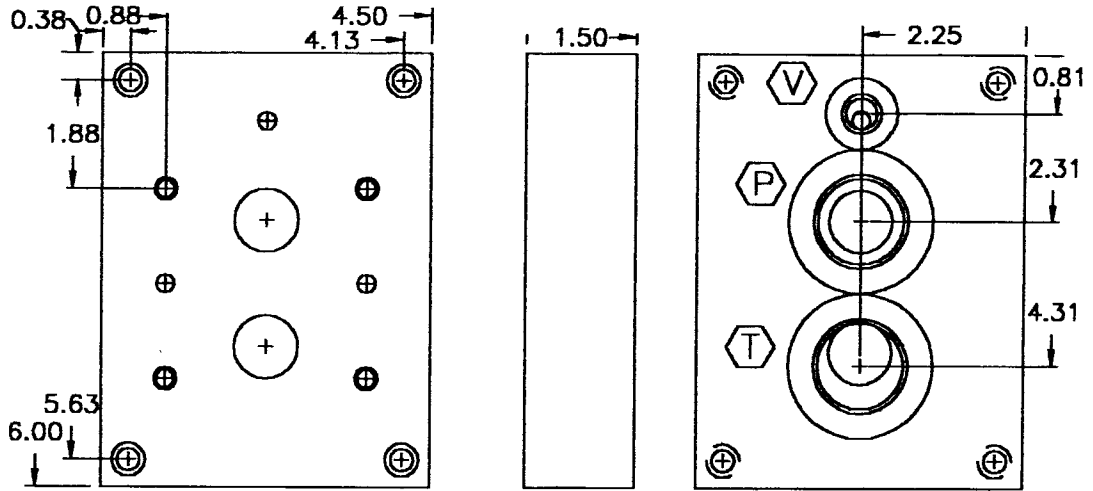
C09 DESIGNATION ——— PART TYPE
PORT SIZE ——— T-SAE THREAD
OMIT FOR NPTF



MED-KAS HYDRAULICS, INC.
P.O. BOX 1163 1419 JOHN R
TROY, MI. 48099 TROY, MI. 48083
TEL: 248-585-3220 FAX # 248 585-0646
WEB SITE: www.med-kas.com E-MAIL: info@med-kas.com

R08 SUBPLATES

SEE TECHNICAL INFORMATION SECTION FOR VALVE MOUNTING DIMENSIONS
BACK PORTED SUBPLATE

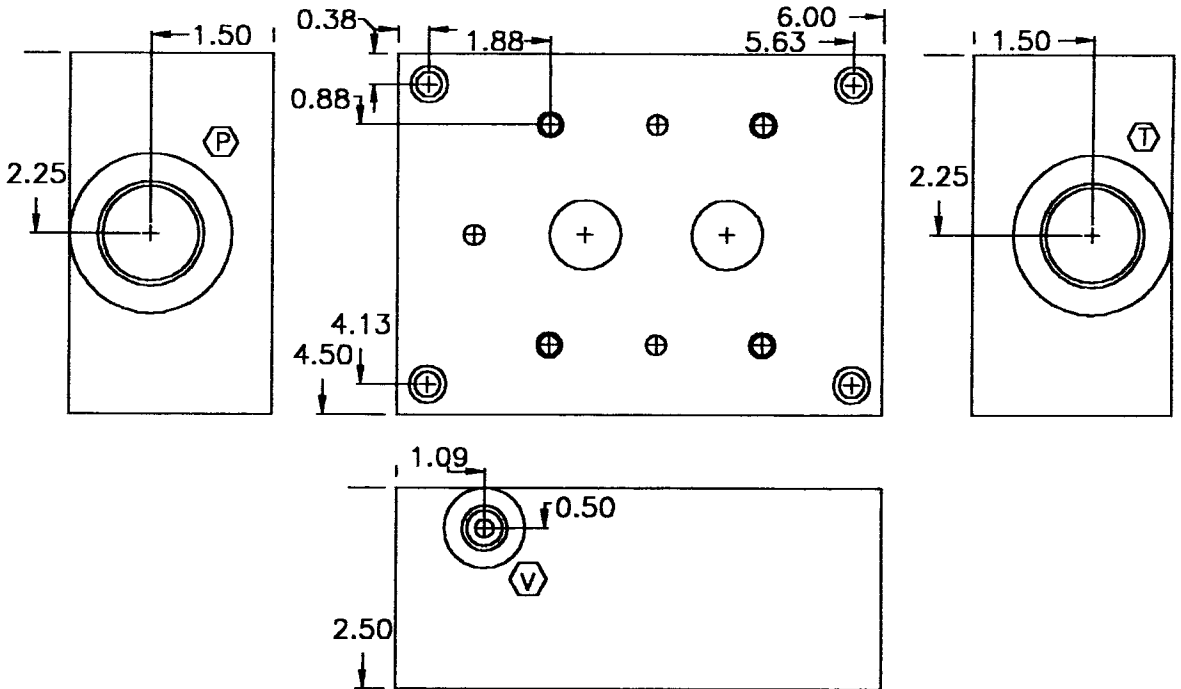


SUBPLATE MOUNTING HOLES
TO ACCOMODATE 3/8-16
SOCKET HEAD CAP SCREWS

PART NO. Q-16-*
ROB DESIGNATION PORT SIZE
BACK PORTED (OMIT FOR SIDE PORTED)
PORT TYPE
T-SAE THREAD
OMIT FOR NPTF

PORT SIZES		
SAE THREAD	1.062-12=12T	1.312-12=16T
NPTF	.750-11.5=12	1.000-11.5=16

SIDE PORTED SUBPLATE



SUBPLATE MOUNTING HOLES
TO ACCOMODATE 3/8-16
SOCKET HEAD CAP SCREWS

PART NO. Q-16-*
ROB DESIGNATION PORT SIZE
PORT TYPE
T-SAE THREAD
OMIT FOR NPTF

PORT SIZES		
SAE THREAD	1.062-12=12T	1.312-12=16T
NPTF	.750-11.5=12	1.000-11.5=16

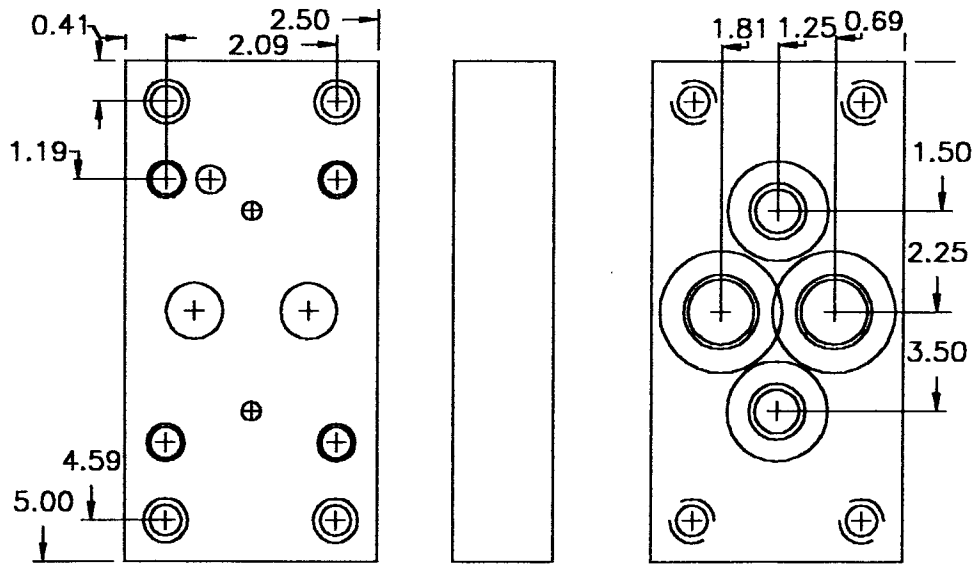


MED-KAS HYDRAULICS, INC.
P.O. BOX 1163 1419 JOHN R
TROY, MI. 48099 TROY, MI. 48083
TEL: 248-585-3220 FAX # 248 585-0646
WEB SITE: www.med-kas.com E-MAIL: info@med-kas.com

SPECIFICATIONS SUBJECT TO CHANGE WITHOUT NOTICE

P06 SUBPLATES

SEE TECHNICAL INFORMATION SECTION FOR VALVE MOUNTING DIMENSIONS
BACK PORTED SUBPLATE



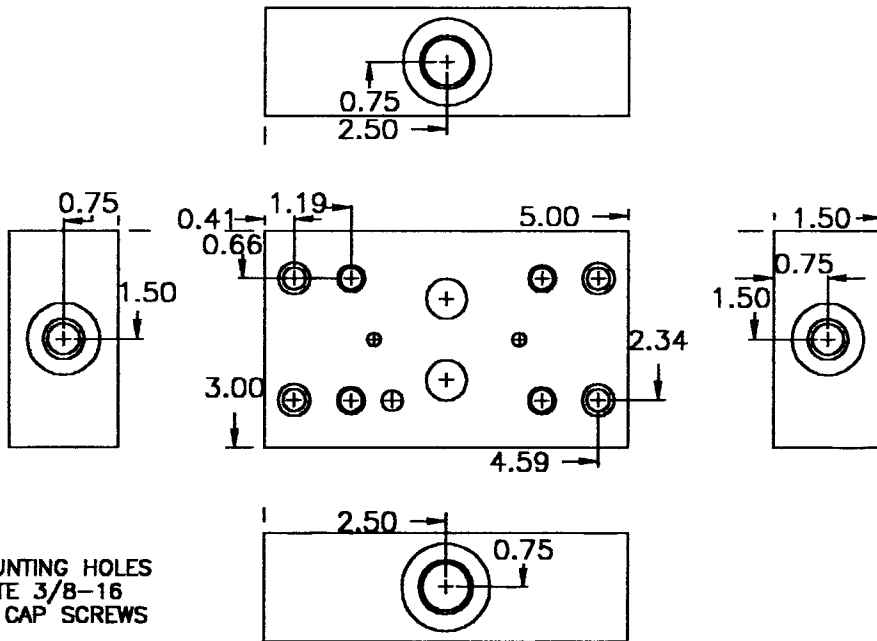
SUBPLATE MOUNTING HOLES
TO ACCOMMODATE 3/8-16
SOCKET HEAD CAP SCREWS

PORT SIZES

SAE THREAD	.562-18=6T	.750-16=8T
NPTF	.375-18=6	.500-14=8

PART NO. K-B*-B
P06 DESIGNATION PORT SIZE
BACK PORTED (OMIT FOR SIDE PORTED)
PORT TYPE T-SAE THREAD OMIT FOR NPTF

SIDE PORTED SUBPLATE



SUBPLATE MOUNTING HOLES
TO ACCOMMODATE 3/8-16
SOCKET HEAD CAP SCREWS

PORT SIZES

SAE THREAD	.562-18=6T	.750-16=8T
NPTF	.375-18=6	.500-14=8

PART NO. K-B*-B
P06 DESIGNATION PORT SIZE
PORT TYPE T-SAE THREAD OMIT FOR NPTF



MED-KAS HYDRAULICS, INC.

P.O. BOX 1163
TROY, MI. 48099

1419 JOHN R
TROY, MI. 48083

TEL: 248-585-3220

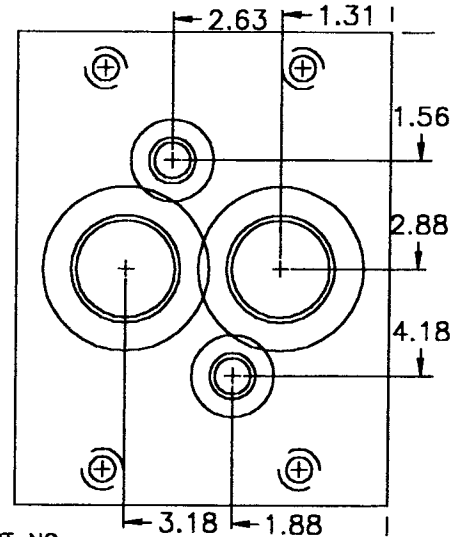
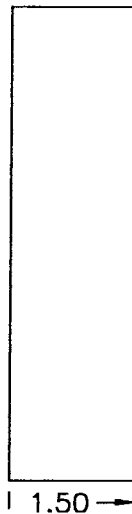
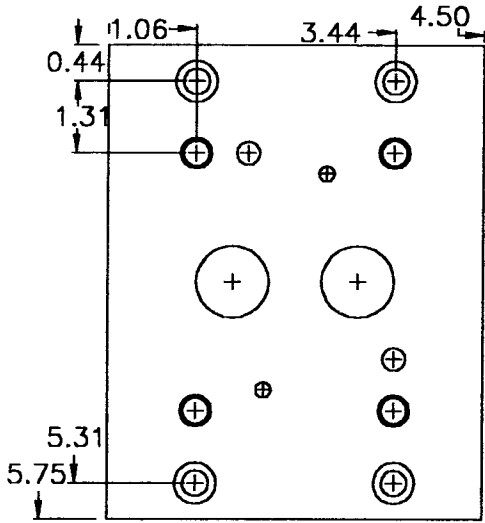
FAX # 248 585-0646

WEB SITE: www.med-kas.com

E-MAIL: info@med-kas.com

P08 SUBPLATES

SEE TECHNICAL INFORMATION SECTION FOR VALVE MOUNTING DIMENSIONS
BACK PORTED SUBPLATE

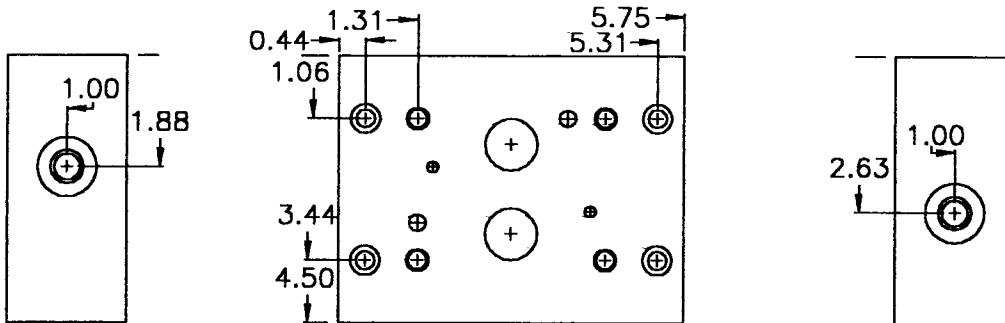
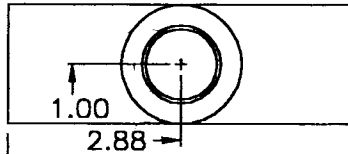


SUBPLATE MOUNTING HOLES
TO ACCOMMODATE 3/8-16
SOCKET HEAD CAP SCREWS

PORT SIZES		
SAE THREAD	1.062-12=12T	1.312-12=16T
NPTF	.750-11.5=12	1.000-11.5=16

PART NO. L-16-*
PO8 DESIGNATION L-16-*
PORT SIZE *
BACK PORTED (OMIT FOR SIDE PORTED)
PORT TYPE T-SAE THREAD
OMIT FOR NPTF

SIDE PORTED SUBPLATE



SUBPLATE MOUNTING HOLES
TO ACCOMMODATE 3/8-16
SOCKET HEAD CAP SCREWS

PORT SIZES		
SAE THREAD	1.062-12=12T	1.312-12=16T
NPTF	.750-11.5=12	1.000-11.5=16

PART NO. L-16-*
PO8 DESIGNATION L-16-*
PORT SIZE *
PORT TYPE T-SAE THREAD
OMIT FOR NPTF

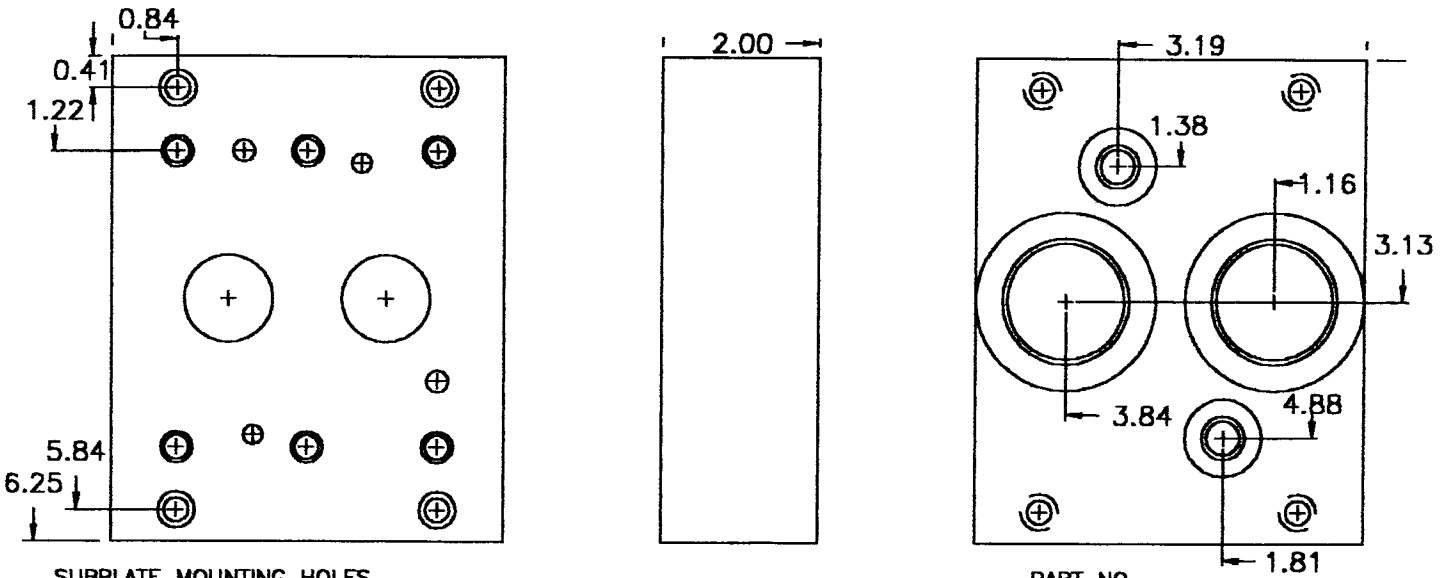


MED-KAS HYDRAULICS, INC.
P.O. BOX 1163 1419 JOHN R
TROY, MI. 48099 TROY, MI. 48083
TEL: 248-585-3220 FAX # 248 585-0646
WEB SITE: www.med-kas.com E-MAIL: info@med-kas.com

SPECIFICATIONS SUBJECT TO CHANGE WITHOUT NOTICE

P10 SUBPLATES

SEE TECHNICAL INFORMATION SECTION FOR VALVE MOUNTING DIMENSIONS
BACK PORTED SUBPLATE

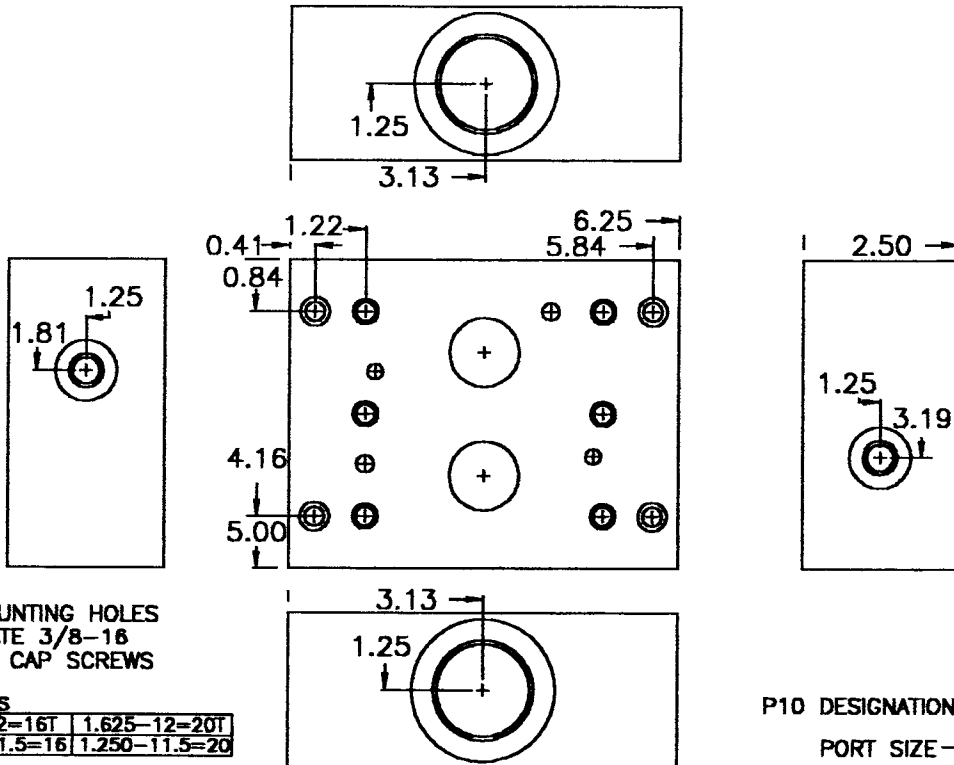


SUBPLATE MOUNTING HOLES
TO ACCOMMODATE 3/8-16
SOCKET HEAD CAP SCREWS

PORT SIZES		
SAE THREAD	1.312-12=16T	1.625-12=20T
NPTF	1.000-11.5=16	1.250-11.5=20

PART NO. N-20-*B
P10 DESIGNATION PORT SIZE BACK PORTED (OMIT FOR SIDE PORTED) PORT TYPE T-SAE THREAD OMIT FOR NPTF

SIDE PORTED SUBPLATE



SUBPLATE MOUNTING HOLES
TO ACCOMMODATE 3/8-16
SOCKET HEAD CAP SCREWS

PORT SIZES		
SAE THREAD	1.312-12=16T	1.625-12=20T
NPTF	1.000-11.5=16	1.250-11.5=20

PART NO. N-20-*
P10 DESIGNATION PORT SIZE PORT TYPE T-SAE THREAD OMIT FOR NPTF



MED-KAS HYDRAULICS, INC.

P.O. BOX 1163 1419 JOHN R
TROY, MI. 48099 TROY, MI. 48083

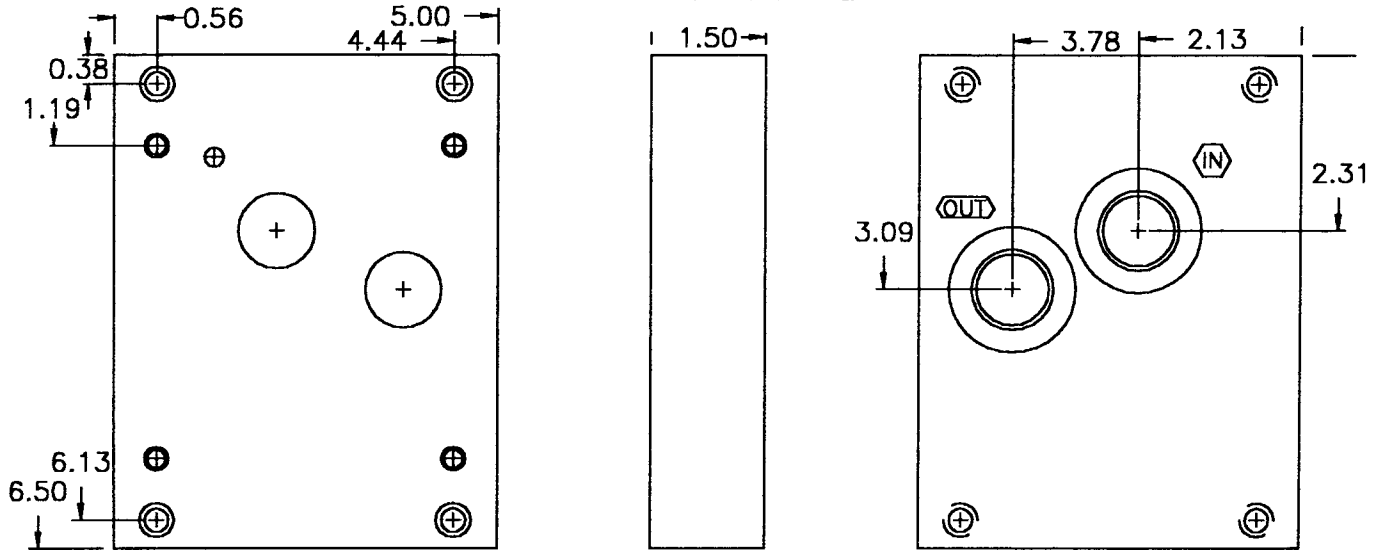
TEL: 248-585-3220 FAX # 248 585-0646

WEB SITE: www.med-kas.com E-MAIL: info@med-kas.com

CPG06 SUBPLATES

SEE TECHNICAL INFORMATION SECTION FOR VALVE MOUNTING DIMENSIONS

BACK PORTED SUBPLATE

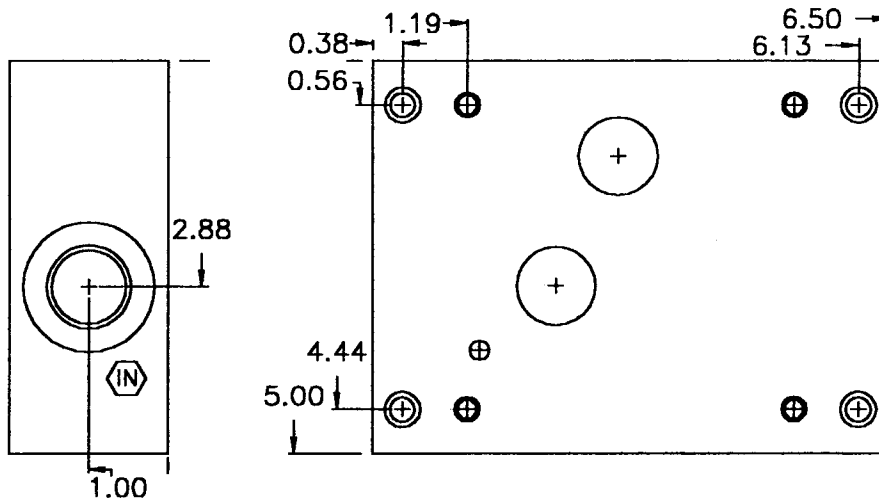


SUBPLATE MOUNTING HOLES
TO ACCOMODATE 3/8-16
SOCKET HEAD CAP SCREWS

PORT SIZES		
SAE THREAD	1.062-12=12T	1.312-12=16T
NPTF	.750-11.5=12	1.000-11.5=16

PART NO. DE-12-*^T-B
 CPG06 DESIGNATION DE-12-*^T-B
 PORT SIZE *^T
 BACK PORTED (OMIT FOR SIDE PORTED)
 PORT TYPE T-SAE THREAD
 OMIT FOR NPTF

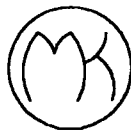
SIDE PORTED SUBPLATE



SUBPLATE MOUNTING HOLES
TO ACCOMODATE 3/8-16
SOCKET HEAD CAP SCREWS

PORT SIZES		
SAE THREAD	1.062-12=12T	1.312-12=16T
NPTF	.750-11.5=12	1.000-11.5=16

PART NO. DE-12-*^T
 CPG06 DESIGNATION DE-12-*^T
 PORT SIZE *^T
 PORT TYPE T-SAE THREAD
 OMIT FOR NPTF



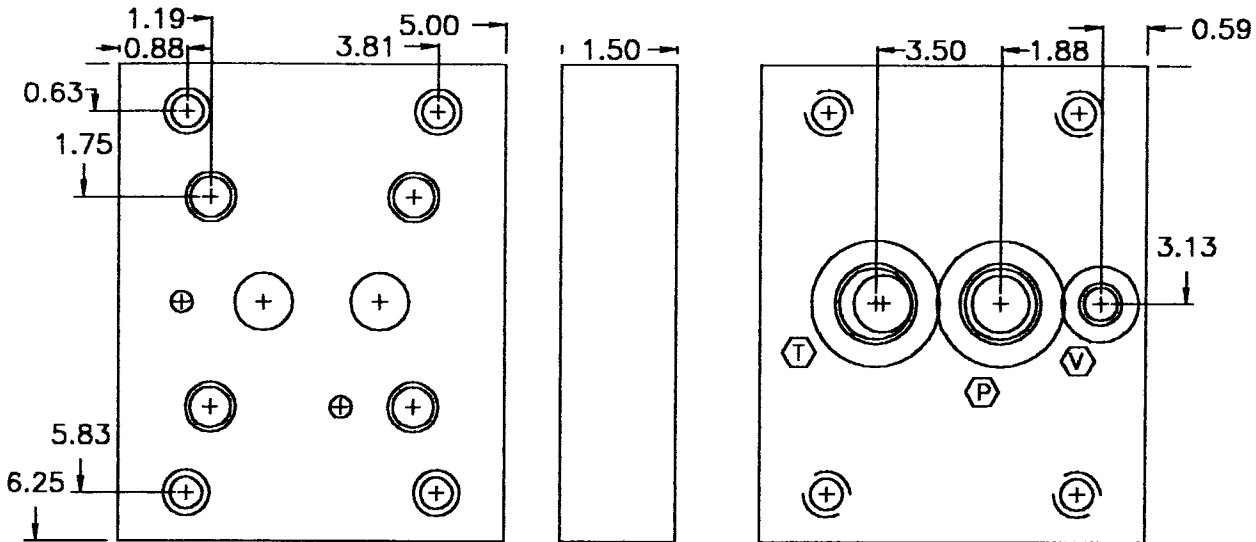
MED-KAS HYDRAULICS, INC.
 P.O. BOX 1163 1419 JOHN R
 TROY, MI. 48099 TROY, MI. 48083
 TEL: 248-585-3220 FAX # 248 585-0646
 WEB SITE: www.med-kas.com E-MAIL: info@med-kas.com

SPECIFICATIONS SUBJECT TO CHANGE WITHOUT NOTICE

CG06 SUBPLATES

SEE TECHNICAL INFORMATION SECTION FOR VALVE MOUNTING DIMENSIONS

BACK PORTED SUBPLATE



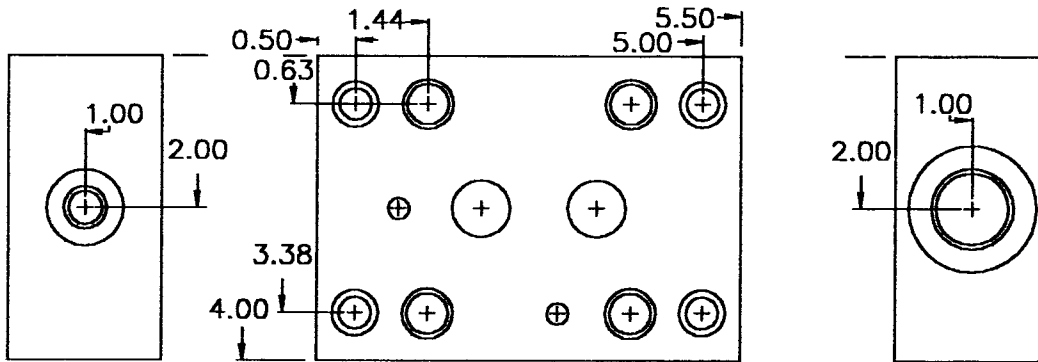
SUBPLATE MOUNTING HOLES
TO ACCOMODATE 1/2-13
SOCKET HEAD CAP SCREWS

PART NO. BL-12-*
CG06 DESIGNATION
PORT SIZE
BACK PORTED (OMIT FOR SIDE PORTED)
PORT TYPE
T-SAE THREAD
OMIT FOR NPTF

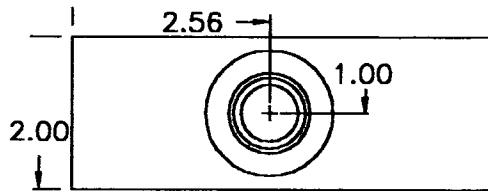
PORT SIZES

SAE THREAD	1.062-12=12T	1.312-12=16T
NPTF	.750-11.5=12	1.000-11.5=16

SIDE PORTED SUBPLATE



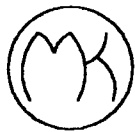
SUBPLATE MOUNTING HOLES
TO ACCOMODATE 1/2-13
SOCKET HEAD CAP SCREWS



PORT SIZES

SAE THREAD	1.062-12=12T	1.312-12=16T
NPTF	.750-11.5=12	1.000-11.5=16

PART NO. BL-12-*
CG06 DESIGNATION
PORT SIZE
PORT TYPE
T-SAE THREAD
OMIT FOR NPTF



MED-KAS HYDRAULICS, INC.

P.O. BOX 1163 1419 JOHN R
TROY, MI. 48099 TROY, MI. 48083

TEL: 248-585-3220 FAX # 248 585-0646

WEB SITE: www.med-kas.com

E-MAIL: info@med-kas.com